

The Use of Reality Capture Technology to Develop Pedestrian Models

Introduction

Redesigning, repurposing, or reviewing the operation of existing buildings can present challenges including a potential lack of full and accurate 3D spatial records. Arup has worked with in-house and external specialists to use reality capture scanning to develop 3D models of existing spaces, where data is unavailable or incomplete. Such 3D models can be invaluable to inform redesign by efficiently providing spatial data, which increases efficiency and confidence. Arup's people movement teams have also utilised reality capture to develop realistic 3D models for Oasys MassMotion dynamic simulation. MassMotion efficiently imports 3D models, for detailed assessments, which inform and are used to optimise redesign or operation of an existing space. Clients can “walk through” and experience a space to provide confidence prior to investment in construction.

Reality Capture Scanning

Reality Capture Scanning includes the use of technology including LiDAR (Light Detection and Ranging) and Matterport to capture and process spatial data visually and digitally.- The scanning technology uses laser beams to collect detailed 3D point cloud data, to represent the shape and features of a building or structure that can be used for feature extraction and desktop surveys. The high-quality 3D data can be captured for spaces from 1m² to 100m² at one time, with measurable outputs of less than 6mm Point Cloud difference. This accuracy allows users to measure the distance between objects and/or areas with accuracy. The point cloud can then be processed using software, such as MicroStation, to convert the output into the format required for pedestrian modelling tools like MassMotion.

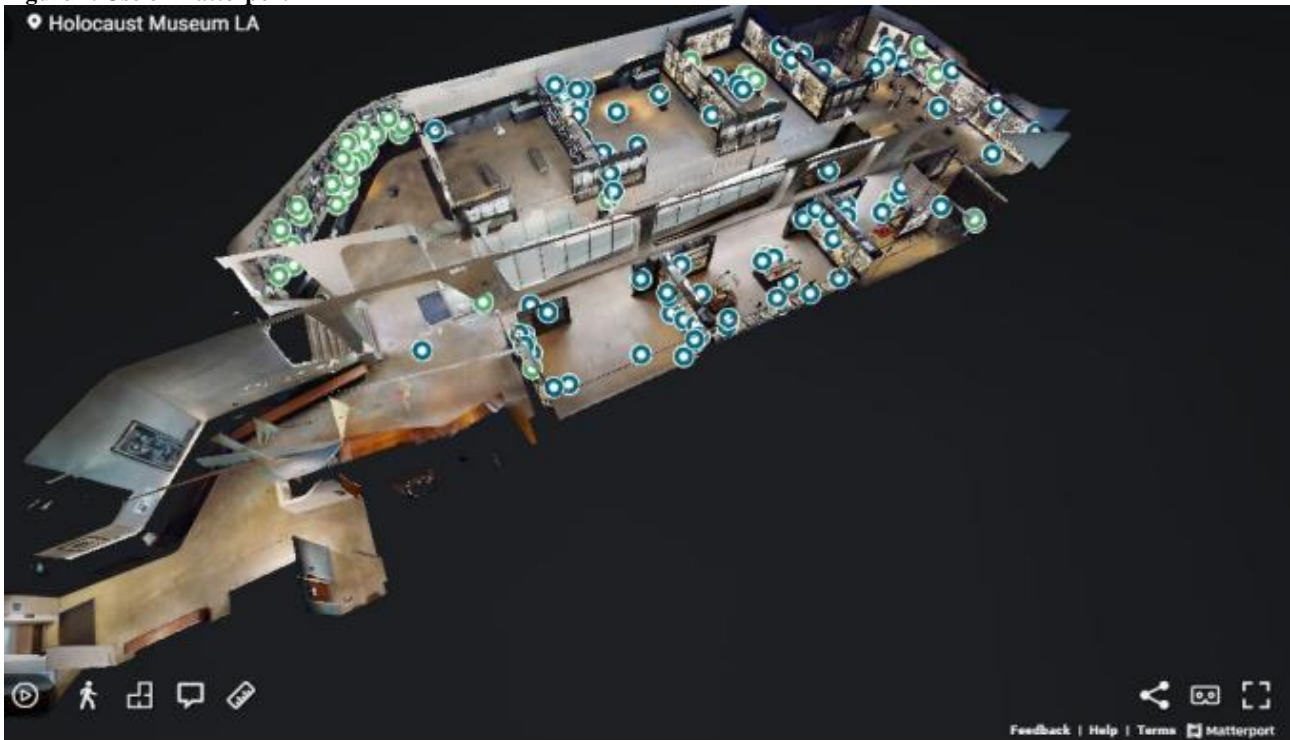
3D scanning removes the need for multiple return site visits and reduces the risk of incorrect documentation. Users can revisit a site virtually and take additional measurements using a site explorer walk-through, including output surfaces and 3D models for further design. Therefore, reality capture scanning is especially useful for engineering projects, to reduce risk, increase efficiency and improve confidence in the work carried out.



Figure 1: LiDAR Scanners



Figure 2: Use of Matterport



Benefits of reality capture	Challenges with reality capture
<ul style="list-style-type: none"> • Production of highly accurate data for existing buildings and structures, which do not already have up to date comprehensive documentation. • Ability to capture smaller and non-structural details, such as gates, barriers, furniture, and light structures (such as shops, cafes) etc. • Improved analysis and visualisation as more details are captured. • Data collection is efficient and cost-effective compared to traditional methods; potentially saving weeks of time. • Reduces risk, by providing highly accurate baseline data. • Improves efficiency by eliminating the need for further site visits, so reduces costs. • Increases confidence that any analysis or data is correct. • The accuracy and detail captured means models created can provide a virtual reality experience for clients and other users, which allow them to experience a design before investing in expensive detailed design and construction. 	<ul style="list-style-type: none"> • Difficulty in scanning certain types of structures (i.e., over a large distance, blind spots, 24-hour operation of some buildings). • Requires specialised equipment, software, and a skilled operator. • Data privacy and security issues. • LiDAR cannot see through or behind an object. • Infrared scanners may only be effective inside buildings.

People movement and pedestrian modelling

The dynamic interactions between people and spaces have become increasingly important to consider as new technology shapes the way we design, build, and experience our surroundings. People movement assessments can cover a range of built and urban environments, including interchanges, stations, offices, museums, stadia, and leisure facilities. These assessments often involve detailed analysis of complex environments using dynamic modelling, which provides qualitative and quantitative results on the operation of a space.

Based on pioneering research into the science of human movement and refined by data from real world projects, MassMotion dynamic pedestrian modelling software provides technical analysis of people's movement through physical spaces. It allows planners and engineers to test different designs, population levels, and operational overlays from a human perspective and is the most flexible people movement software available.

Setting up a MassMotion model using a scanned model is easy, fast, and efficient and provides high quality 3d outputs. The software can even automatically identify and assign objects, such as floors and barriers, which can further reduce model set up times.

The use of LiDAR Scanning and MassMotion pedestrian modelling is particularly useful for constrained spaces, such as underground stations, where there is little scope to extend the building. The software could allow the assessment of redesign options which utilise the full extent of the available height, by modelling and testing options such as a mezzanine level or realigning vertical transport.

The software could allow the assessment of redesign options which utilise the full extent of the available height, by modelling and testing options such as a mezzanine level or realigning vertical transport.

Project Examples

Underground Interchange

LiDAR scanning was utilised by Arup to obtain a 3D spatial model of a historic and listed underground interchange station in Eastern Europe.

The large and complex interchange station covers multiple levels and includes 3 separate stations, 6 platforms and connects 4 different train lines. The station has a network of long span escalators, which connect the different levels. Passenger levels are high, reaching up to 60,000 people during the morning and evening peak hours; and the station is operational 21 hours a day, which restricted the ability to obtain data for the station.

Due to the high passenger volumes the client was interested in investigating options to enhance the operation of the station. The development of a pedestrian model was therefore required to assess different layouts, but there was a lack of precise up-to-date drawings and no information on the height of the different levels. As well as the lack of spatial data, there was also no accurate information on the location of facilities including ticket gates, retail, ticket offices and machines. The accuracy of the location of these elements and other barriers is important to obtain realistic results from the models. The project also had challenging timescales and therefore a quick, but accurate solution was required, therefore reality capture was considered.

Within 2 weeks, the client had scanned the entire structure of the interchange, following the brief developed by Arup, during night-time when the station was closed, and a 3D model had been developed and was ready to be imported into MassMotion.

Figure 3: LiDAR model of the underground interchange station

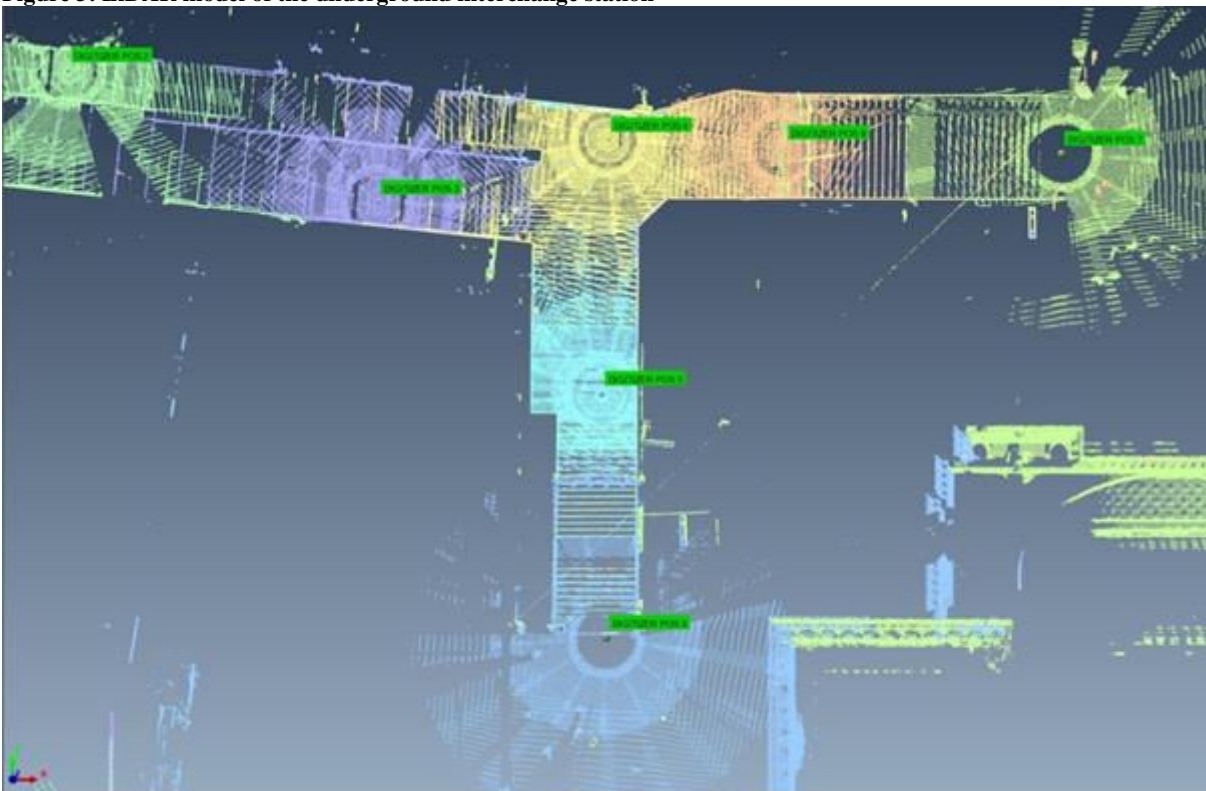


Figure 4: LiDAR model of the underground interchange station

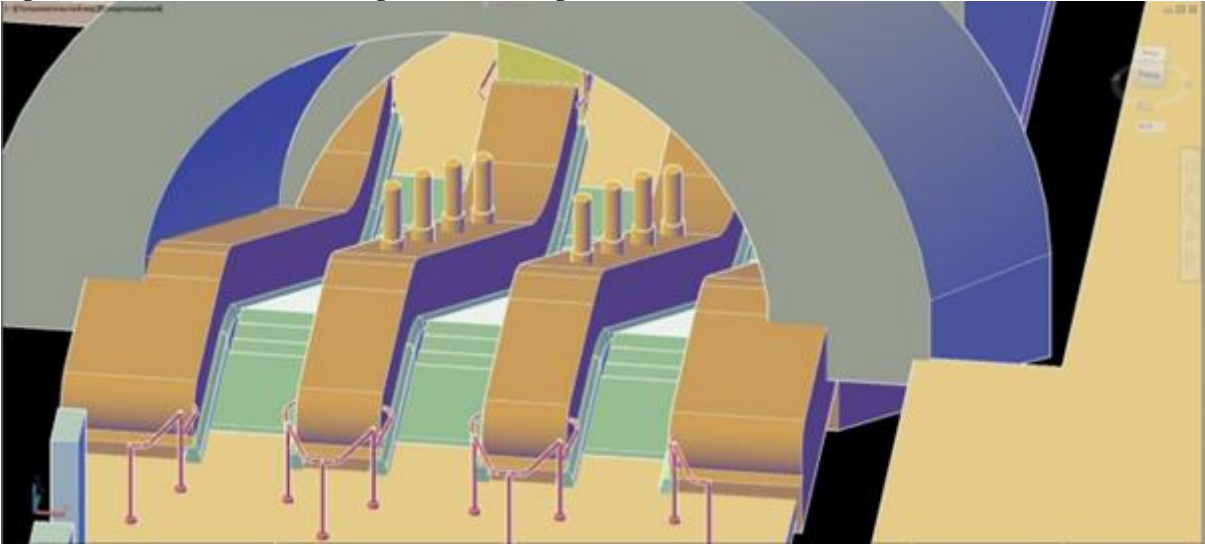
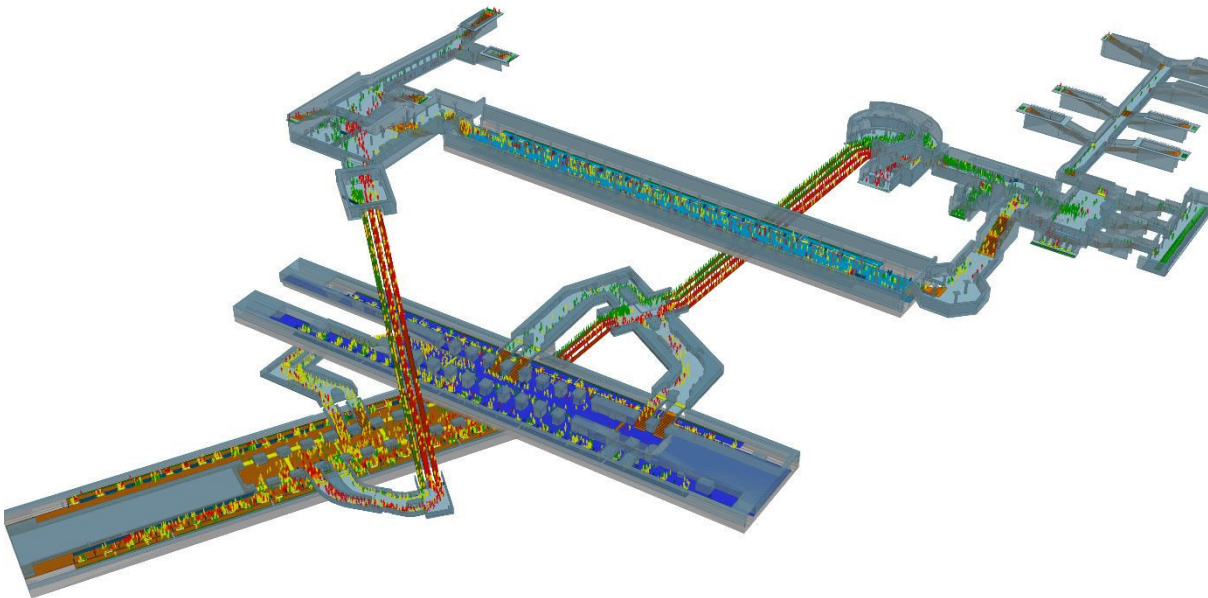


Figure 5: MassMotion model of the underground interchange station



The enhancement options assessed within MassMotion included:

- Optimisation of pedestrian circulation throughout the entire station to reduce the number of crossing passenger flows. This included alterations to escalators, staircases, and passage directions.
- The addition of slimmer escalators, to accommodate more escalators within the existing space.
- Optimising entrance and exit group layouts, including changes to ticket gates, retail locations and ticket machine arrangements.
- Removing some of the existing staircases and replacing them with ramps.

The outcomes of the study included:

- Several soft measures to optimise pedestrian circulation within the station were modelled, shown to be successful and then implemented within the station. This involved changing the direction of staircases, passages, and escalators, improving entrance layouts for more efficient operation (such as rearranging gates and relocating ticket boxes and machines), and removing retail units that obstructed passenger flows.
- A scenario of adding one new escalator by refitting with modern slimmer machinery was tested which, allowed the client to observe how the station would operate and provided them with confidence in the decision before making significant investment into design and construction.
- A scenario of temporarily closing one of the escalators for construction work was developed and tested. This helped estimate the increase in queuing and delays compared to normal operation, as well as plan for measures, including reducing demand during the construction period.

Figure 6 – An entrance layout before and after enhancement options

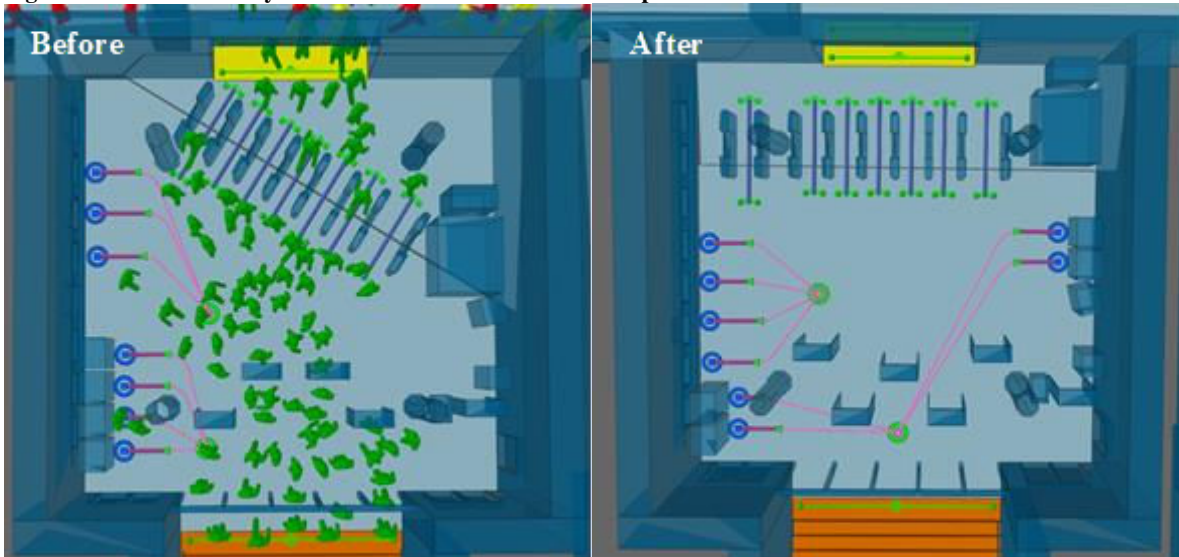


Figure 7 – Retail units obstructing passenger flow

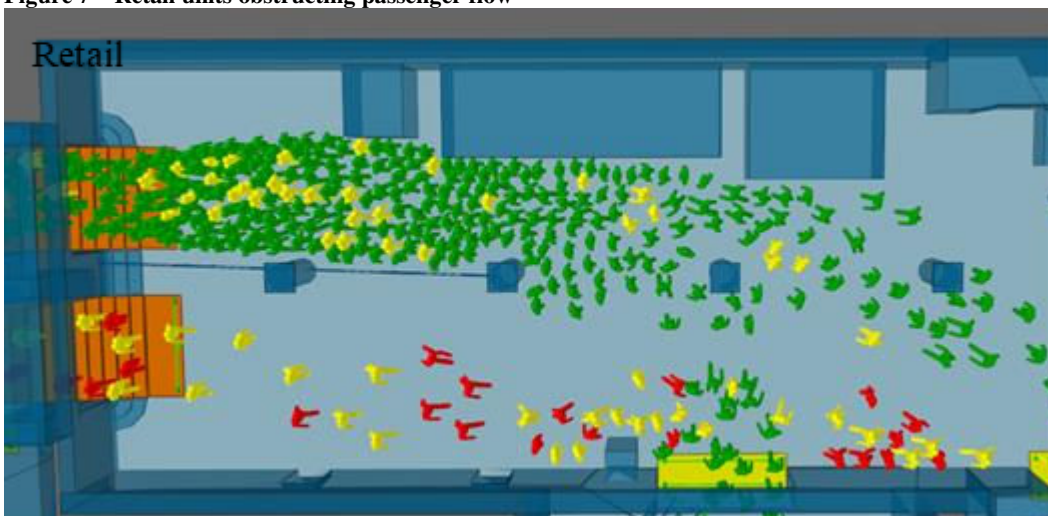
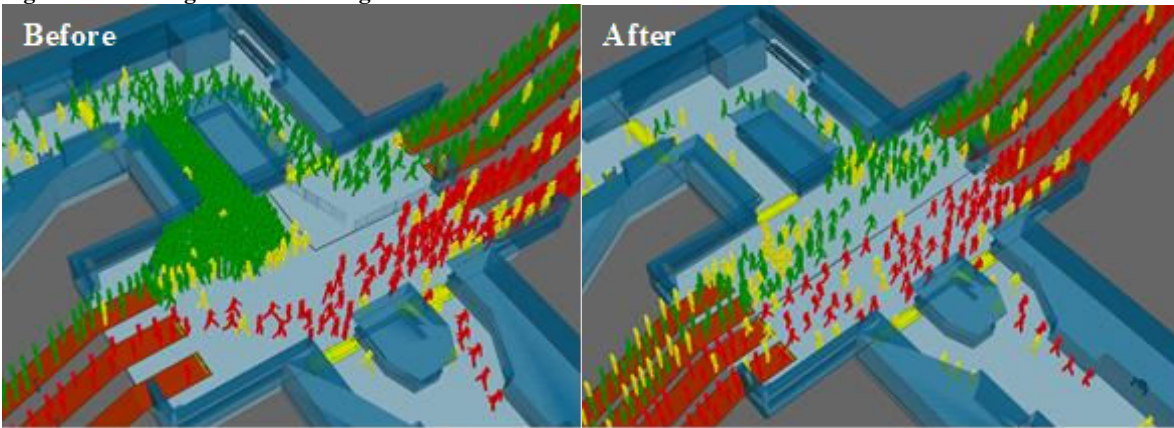


Figure 8 – Existing escalator arrangement vs addition of a new escalator



Arup Office Models

As part of a pandemic return to office assessment, LiDAR models of the Arup Offices in Solihull and Nottingham were imported into MassMotion to develop models to assess one-way systems and the probability of close contact. The use of reality scanning was vital to collect realistic information about the office including the amount and location of furniture. The models provided an understanding of the locations where conflicts were most likely and allowed for testing of potential mitigation measures including one-way routes.

Figure 10: Arup’s Solihull Office MassMotion Model Fruin level of service

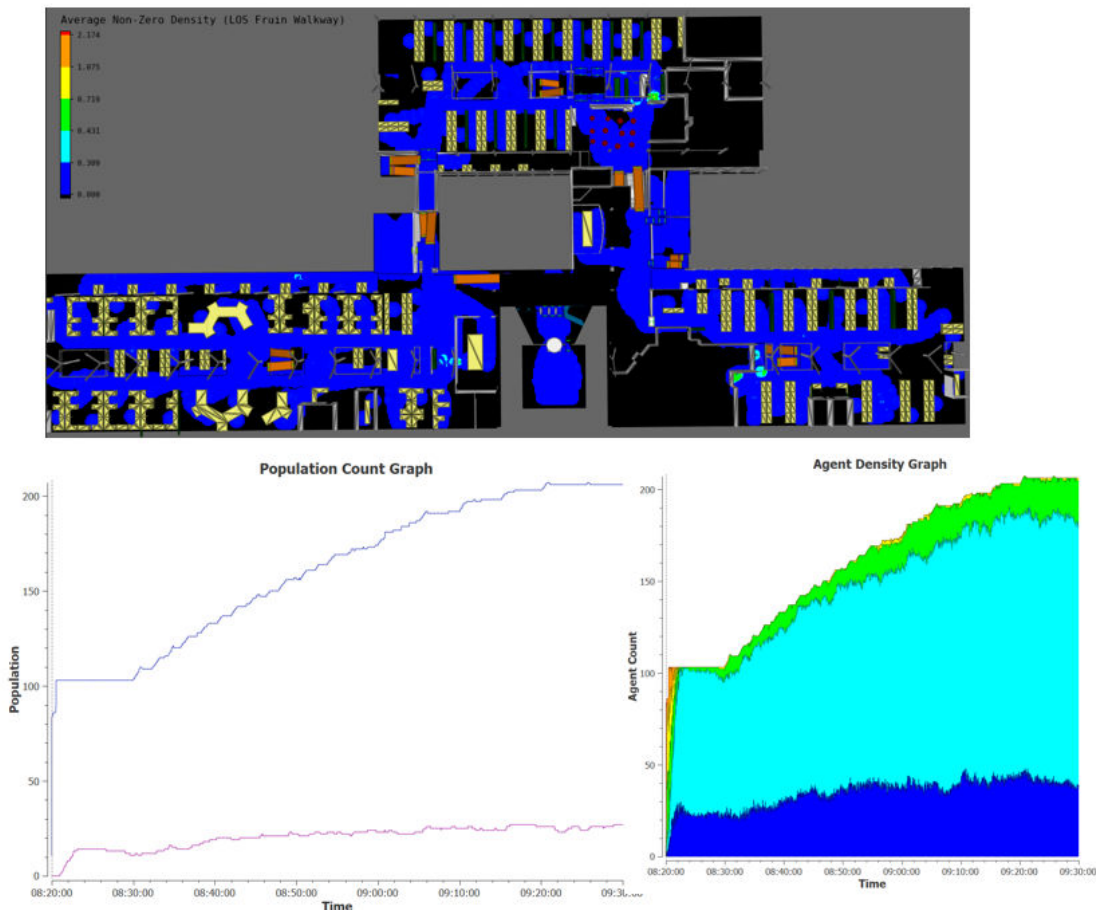


Figure 11: Arup's Solihull Office MassMotion Model

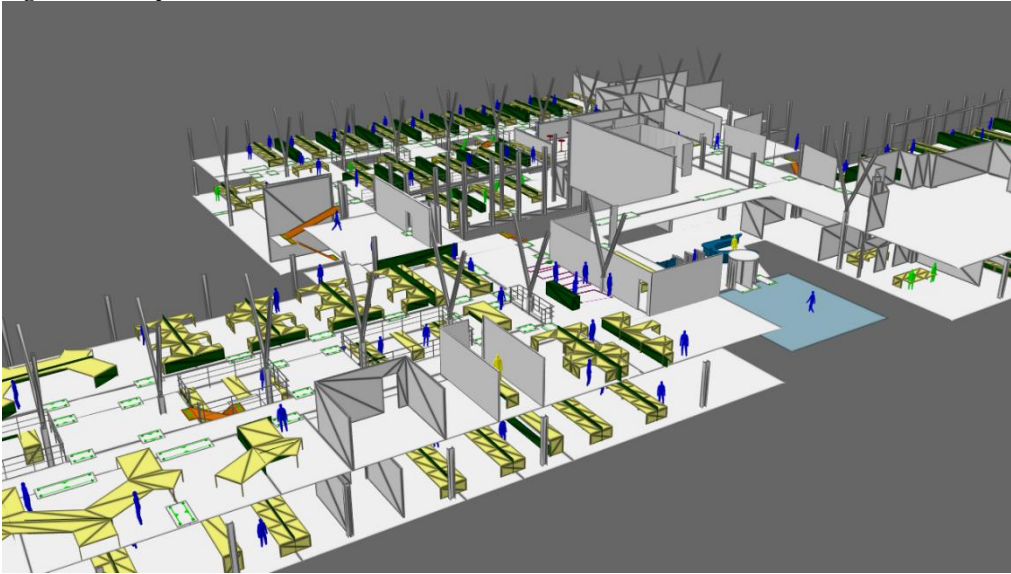
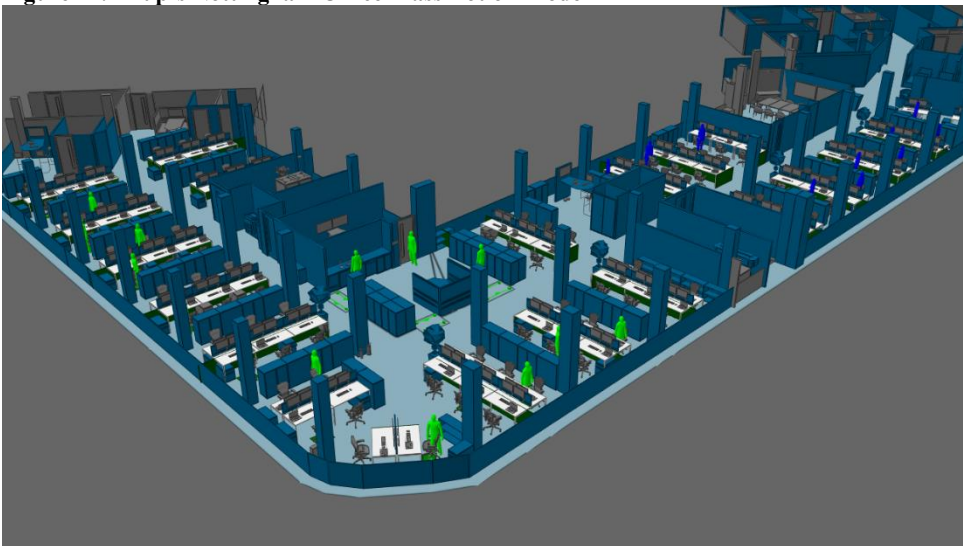


Figure 12: Arup's Nottingham Office MassMotion Model



Major Findings and conclusion

These studies show that reality capture scanning has been vital to enable the development of dynamic pedestrian models. Without this technology the manual collection of data would add weeks and significant cost to any project.

There are many reality scanning options available, and the type used will depend on the project requirements and location. However, LiDAR scanning is recommended and can provide the data needed to build a large model within short timescales. These models can provide a high level of detail and accuracy, which can provide efficiency, confidence, reduce risk and costs. These accurate models are invaluable for redesign and engineering projects.

References:

[Memo \(sharepoint.com\)](#)

[LiDAR Scanning for Learning Burst.pptx \(sharepoint.com\)](#)

<https://www.sciencedirect.com/science/article/pii/S1569843222002539>

<https://www.sciencedirect.com/science/article/abs/pii/S0924271619300048>

National Geographic,2019, ([What is LiDAR? How lasers are driving a revolution in archaeology \(nationalgeographic.com\)](#))