

# Output Options

# Curves

The screenshot shows the 'Write' menu in the software interface. The 'Write' menu item is highlighted in the top menu bar. Below it, the 'Write' dialog box is open. The 'Curves Selected' field shows '0'. The 'Output Type' is set to 'Write to file'. The 'Output Format' is set to 'T/HIS .cur'. The 'Output' field shows 'ache\IEV79CO'. A dropdown menu is open under 'Select Curves...', listing options: 'T/HIS .cur', 'LS-DYNA Keyword', 'NASTRAN TABLED1', 'CSV X,Y,X,Y,X,Y', 'CSV X,Y,Y,Y,Y,Y', 'Summary', and 'Summary (CSV)'. The 'Apply' button is highlighted in blue.

In the Write menu, curve data can be written out to a file or to a pop-up on the screen.

First select the Curve(s) to be written out.

Then select the type of file e.g. CSV.

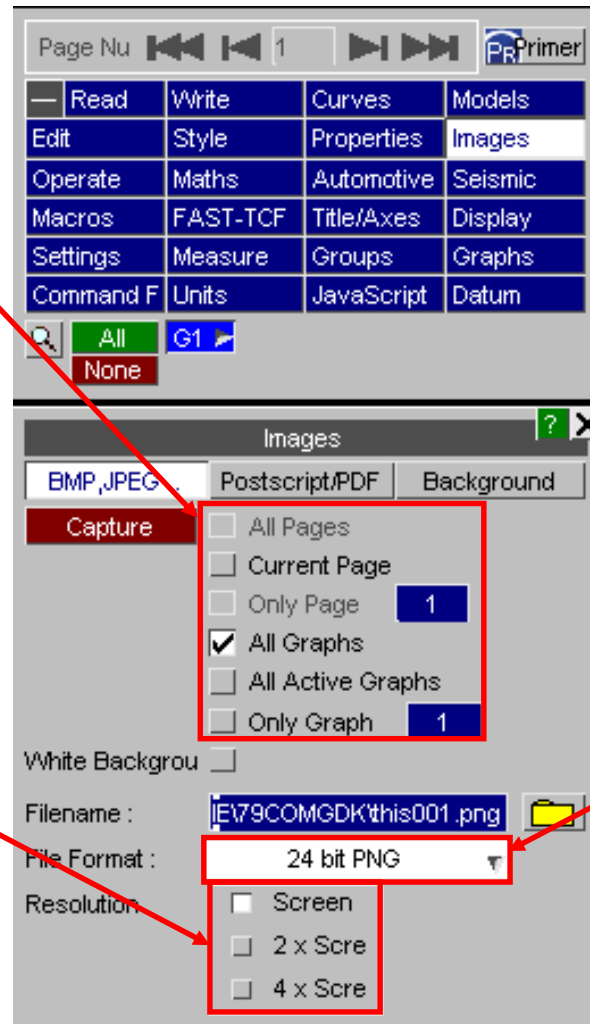
Give the path and filename.

Press Apply.

The screenshot shows the 'Write' dialog box in the software interface. The 'Apply' button is highlighted in blue. The 'Curves Selected' field shows '1'. The 'Output Type' is set to 'Write to file'. The 'Output Format' is set to 'CSV (X,Y,X,Y,X,Y)'. The 'Write UNIT information to CSV file' checkbox is checked. The 'Output' field shows 'ache\IEV79COMGDK\default.csv'. The 'Apply' button is highlighted in blue.

# Images

Images of any combination of the current graphs can be written out to a file.



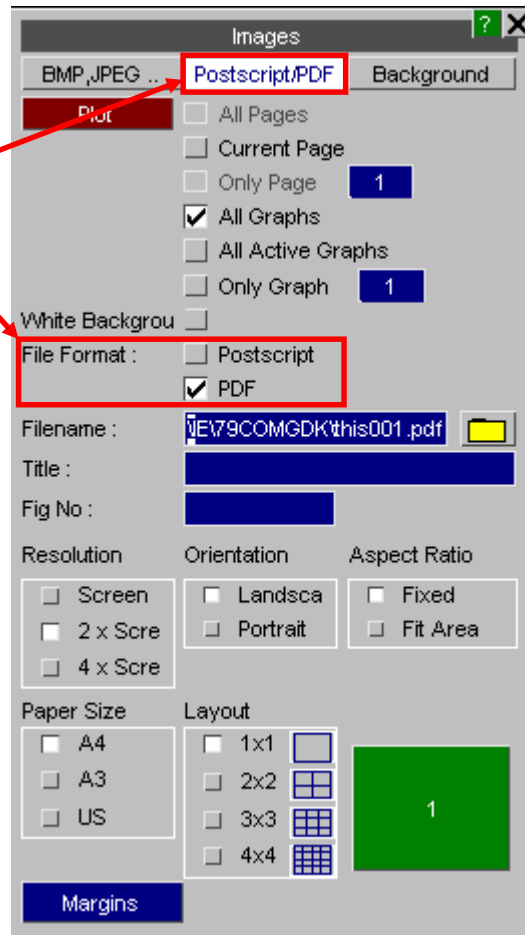
Images can be generated using either the screen resolution or at 2 / 4 times the screen resolution for printed output.

There are a number of options for image output formats, including PNG and GIF.

# Postscript

T/HIS can also write out images as both Postscript and PDF files.

PDF and Postscript files are generated using raster images to reproduce the screen contents exactly.



## Contact Information



[www.arup.com/dyna](http://www.arup.com/dyna)

For more information please contact the following:

**UK:**

The Arup Campus  
Blythe Valley Park  
Solihull  
B90 8AE  
United Kingdom

T +44 121 213 3399  
[dyna.support@arup.com](mailto:dyna.support@arup.com)

**China:**

Arup  
39F/41F  
Huaihai Plaza  
1045 Huaihai Road (M)  
Xuhui District  
Shanghai 200031  
China

T +86 21 3118 8875  
[china.support@arup.com](mailto:china.support@arup.com)

**India:**

Arup  
Ananth Info Park  
HiTec City  
Madhapur Phase-II  
Hyderabad 500081, Telangana  
India

T +91 40 44369797 / 98  
[india.support@arup.com](mailto:india.support@arup.com)

or contact your local Oasys LTD LS-DYNA Environment distributor