

# **GRETA**

Version 19.0

*Oasys*

# Oasys Ltd

---

13 Fitzroy Street  
London  
W1T 4BQ

Central Square  
Forth Street  
Newcastle Upon Tyne  
NE1 3PL  
Telephone: +44 (0) 191 238 7559  
Facsimile: +44 (0) 191 238 7555

e-mail: [oasys@arup.com](mailto:oasys@arup.com)  
Website: <http://www.oasys-software.com/>

# **Greta Oasys Geo Suite for Windows**

© **Oasys Ltd. 2010**

All rights reserved. No parts of this work may be reproduced in any form or by any means - graphic, electronic, or mechanical, including photocopying, recording, taping, or information storage and retrieval systems - without the written permission of the publisher.

Products that are referred to in this document may be either trademarks and/or registered trademarks of the respective owners. The publisher and the author make no claim to these trademarks.

While every precaution has been taken in the preparation of this document, the publisher and the author assume no responsibility for errors or omissions, or for damages resulting from the use of information contained in this document or from the use of programs and source code that may accompany it. In no event shall the publisher and the author be liable for any loss of profit or any other commercial damage caused or alleged to have been caused directly or indirectly by this document.

This document has been created to provide a guide for the use of the software. It does not provide engineering advice, nor is it a substitute for the use of standard references. The user is deemed to be conversant with standard engineering terms and codes of practice. It is the users responsibility to validate the program for the proposed design use and to select suitable input data.

Printed: January 2010

# Table of Contents

<b>Part I About Greta</b>	<b>2</b>
1 General Program Description .....	2
2 Components of the User Interface .....	3
Working with the Gateway .....	3
Preferences .....	4
3 Program Features .....	5
<b>Part II Methods of Analysis</b>	<b>9</b>
1 General .....	9
Overall Stability .....	9
Plastic stress block / Bearing capacity failure.....	13
Sliding check .....	13
Wall and Base Forces .....	14
Shear key .....	17
Bending moments and shear forces.....	18
Earth Pressures .....	19
Friction and adhesion .....	20
Bearing Capacity .....	20
Base Optimisation .....	22
<b>Part III Input</b>	<b>24</b>
1 Assembling Data .....	24
2 Opening the Program .....	24
Intranet link and emails .....	26
3 Data Input Screens .....	27
Titles .....	28
Titles window - Bitmaps.....	29
Units .....	29
Analysis Options .....	30
Wall Geometry .....	31
Material Properties .....	32
Material Layers .....	33
Foundation Properties .....	34
Groundwater .....	35
Surcharges .....	36
Anchor Loading .....	36
Base Optimisation Tool .....	37
<b>Part IV Output</b>	<b>40</b>
1 Analysis and Data Checking .....	40
2 Tabular Output .....	40
3 Graphical Output .....	41

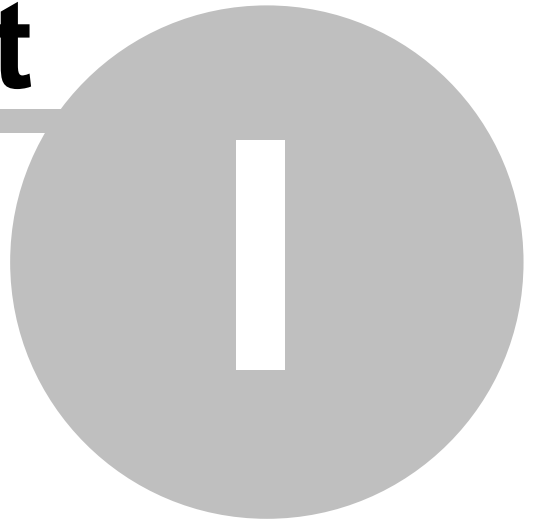
---

<b>Part V List of References</b>	<b>44</b>
1 References .....	44
<b>Part VI Manual Example</b>	<b>46</b>
1 General .....	46
<b>Part VII Brief Technical Description</b>	<b>48</b>
1 Greta .....	48
<b>Index</b>	<b>49</b>

## About Greta

**Part**

---



# 1 About Greta

## 1.1 General Program Description

**Greta** is used for analyzing gravity retaining walls. It performs two calculations which assess the overall stability of the wall and the forces in the stem and base.

The calculation for **Overall Stability** examines the static equilibrium of the wall. The program assumes that full active and passive soil pressures develop on the virtual boundaries behind and in front of the wall respectively. The wall is assumed to act as a rigid body together with any soil encompassed by the vertical planes through the extremities of the wall base.

The total horizontal and vertical forces are resolved to calculate the force on the base of the wall. The required reaction of the foundation soil is then calculated to provide equilibrium of the wall. The bearing capacity of the foundation soil is not checked by the program and must be carried out as a separate calculation by the user.

The location of the resultant force is also checked and reported. If the rotation of the wall due to the applied force is towards the heel then the calculation is stopped.

The program also calculates the horizontal component of load on the wall and the sliding resistance of the foundation. The user can specify separate shear strength parameters for the foundation soil to those used for creation of the active and passive pressures.

Application of factors to loads or soil strengths, to assess the factor of safety of the wall, is at the discretion of the user.

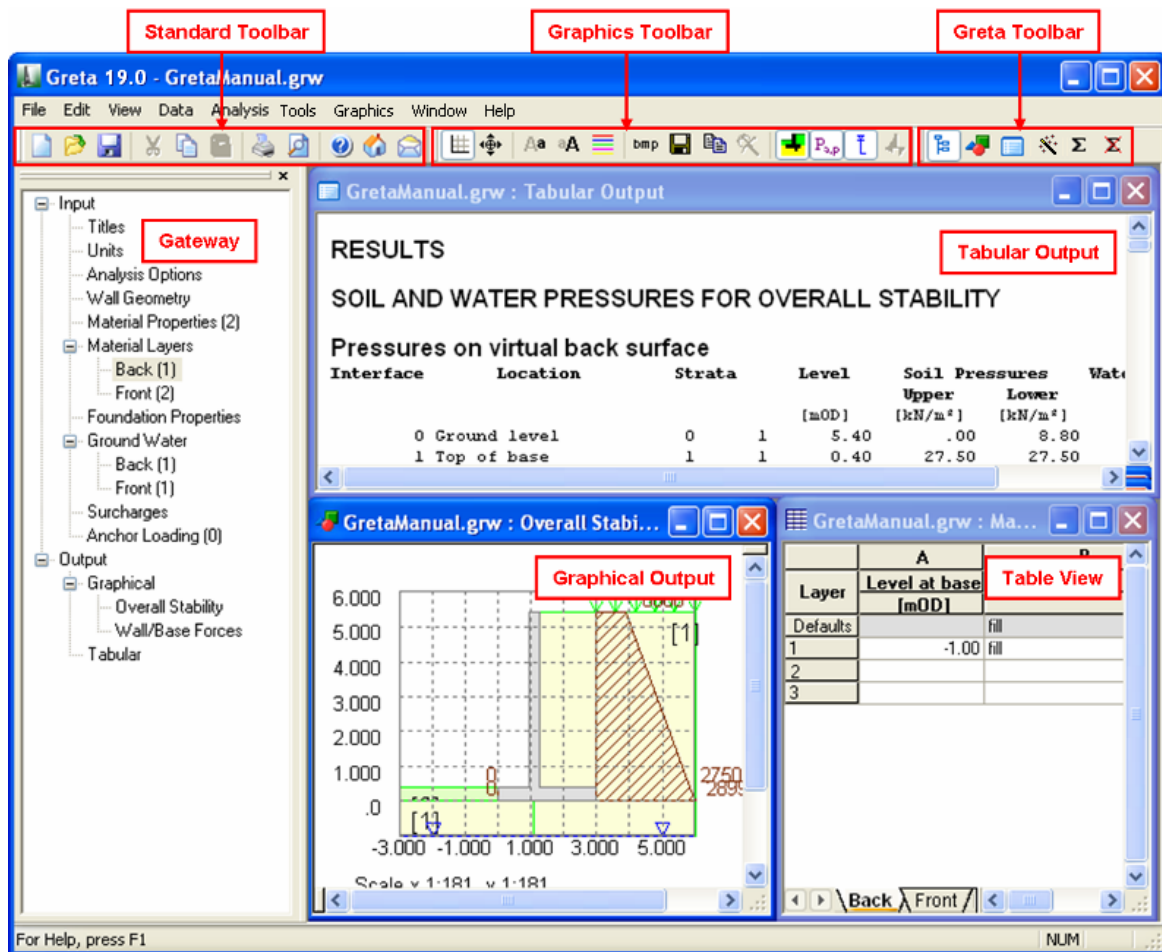
The calculation for the development of **Wall/Base Forces** provides shear forces and bending moments in the stem and base of the wall. The calculation also uses the full active and passive pressures on either side of the wall. These are applied against the stem and base of the wall and not at the virtual boundaries. These may be used in the structural design of the wall.

Note :

Separate soil parameters and anchor loads can be applied to each type of analysis.

## 1.2 Components of the User Interface

The principal components of Greta's user interface are the Gateway, Table Views, Graphical Output, Tabular Output, toolbars, menus and input dialogs. Some of these are illustrated below.



### 1.2.1 Working with the Gateway

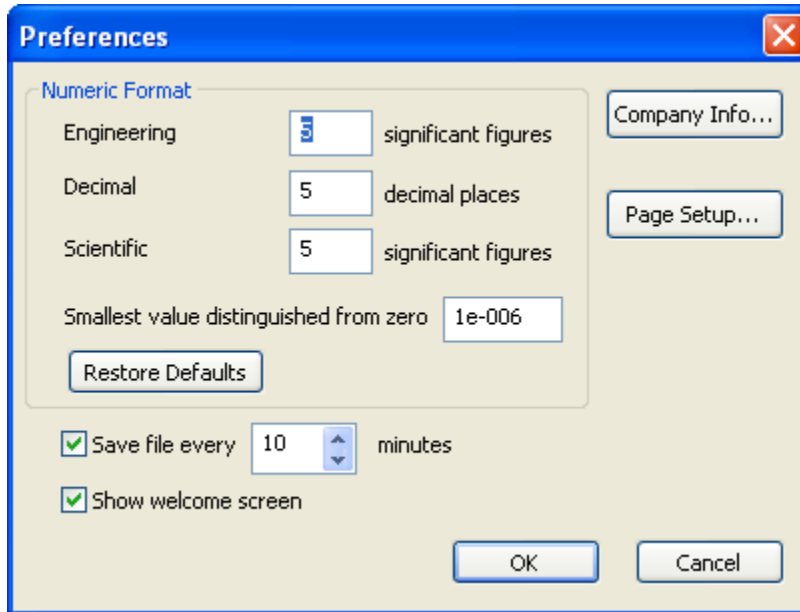
The [Gateway](#) gives access to all the data that is available for setting up a Greta model.

Top level categories can be expanded by clicking on the '+' symbol beside the name or by double clicking on the name. Clicking on the '-' symbol or double clicking on the name when expanded will close up the item. A branch in the view is fully expanded when the items have no symbol beside them.

Double clicking on an item will open the appropriate table view or dialog for data input.

## 1.2.2 Preferences

The Preferences dialog is accessible by choosing Tools | Preferences from the program's menu. It allows user to modify settings such as numeric format for output, show welcome screen, print parameters and company information. These choices are stored in the computer's registry and are therefore associated with the program rather than the data file. All data files will adopt the same choices



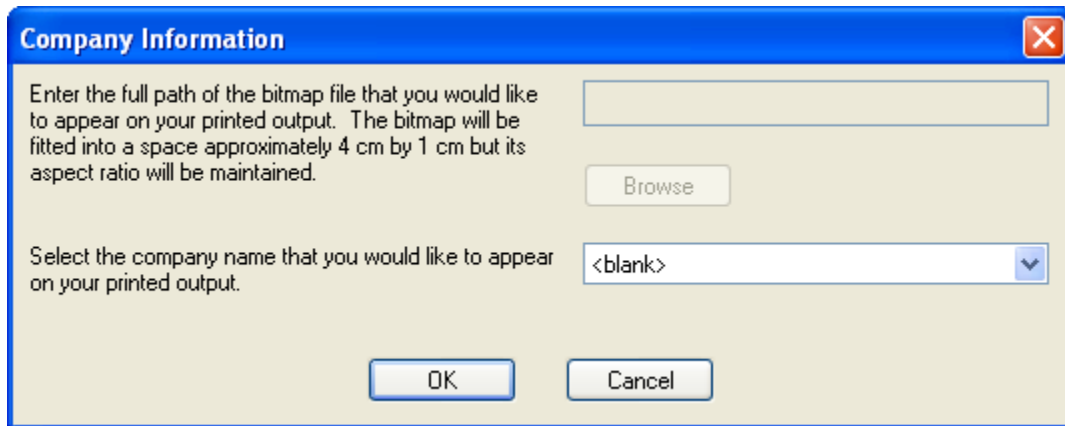
**Numeric Format** controls the output of numerical data in the Tabular Output. The [Tabular Output](#) presents input data and results in a variety of numeric formats, the format being selected to suit the data. Engineering, Decimal, and Scientific formats are supported. The numbers of significant figures or decimal places, and the smallest value distinguished from zero, may be set by the user.

**Restore Defaults** resets the Numeric Format specifications to program defaults.

A time interval may be set to save data files automatically. Automatic saving can be disabled if required by clearing the "**Save file..**" check box.

**Show Welcome Screen** enables or disables the display of the Welcome Screen. The Welcome Screen will appear on program start-up, and give the option for the user to create a new file, to open an existing file by browsing, or to open a recently used file.

**Company info** The company information button in the preferences dialog box allows external companies to specify the bitmap and Company name that they would like to appear the top of the printed output.



To add a bitmap enter the full path of the file. The bitmap will appear fitted into a space approximately 4cm by 1cm. The aspect ratio will be maintained.

**Note!** For internal Arup versions of the program the bitmap option is not available.

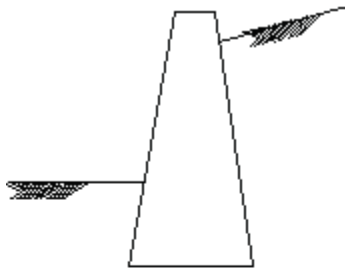
**Page Setup** Opens the Page Setup dialog allowing the style of output for printed text and graphics to be selected.

If 'Calculation Sheet Layout' is selected the page is formatted as a calculation sheet with details inserted in the page header. If 'Logo' is selected the company logo is inserted in the top left corner of the page. If 'Border' is selected this gives a border but no header information. If 'Clipped' is selected the output is clipped leaving a space for the logo. This has no effect on text output.

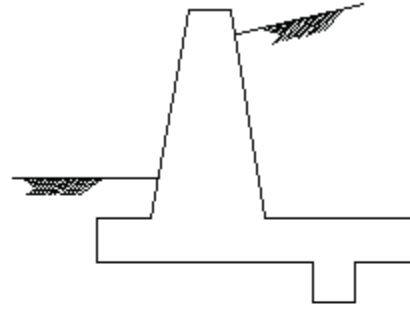
## 1.3 Program Features

The main features of **Greta** are summarised below:

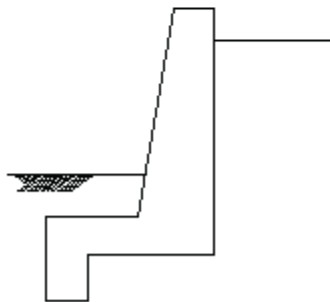
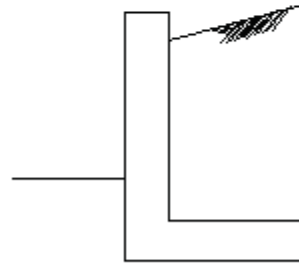
- **Structural Types** : A number of different wall shapes may be specified, with tapering and/or sloping stem, and optional base, toe, heel and key.



Mass Gravity



'T' Wall with Shear Key

Cantilever wall with  
Toe and shear key

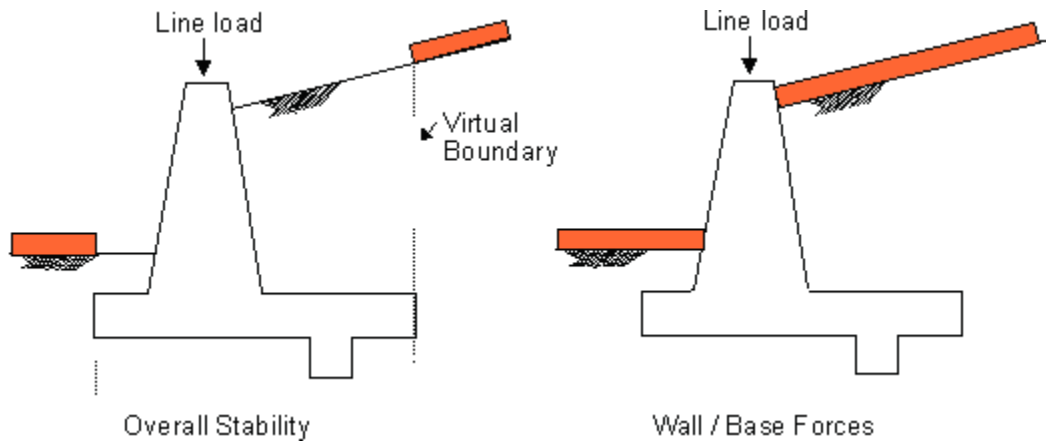
Cantilever wall with heel

Note : The wall is assumed to be rigid and can only be made of one material type with a single specified unit weight.

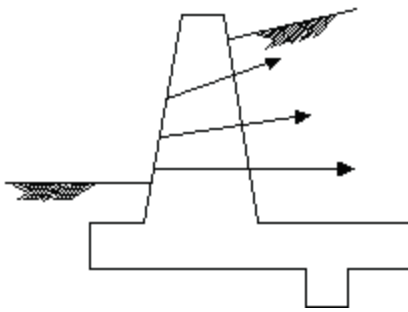
- **Soil Strata** : The program allows a number of different soil strata to be specified behind and in front of the wall. The ground surface behind the wall may be specified as sloping. The surface in front must be horizontal.
- **Soil Coefficients** : Different soil coefficients may be specified for the calculation of Wall/ Base Forces and Overall Stability.
- **Ground Water Pressures** : The groundwater pressure distribution may be defined as a 'hydrostatic' or piezometric.
- **Uniform Surcharges** : These act vertically and may be included behind and in front of the wall.

For the Overall Stability Analysis, surcharge loads are taken into consideration only in so far as they increase lateral earth pressures. They are not directly included in the equilibrium analysis.

- A **line load**, acting at the centre of the top of the wall, may also be specified.



- **Ground Anchors** can be added down the stem of the wall. Each anchor can have a different inclination, elevation and anchor force.

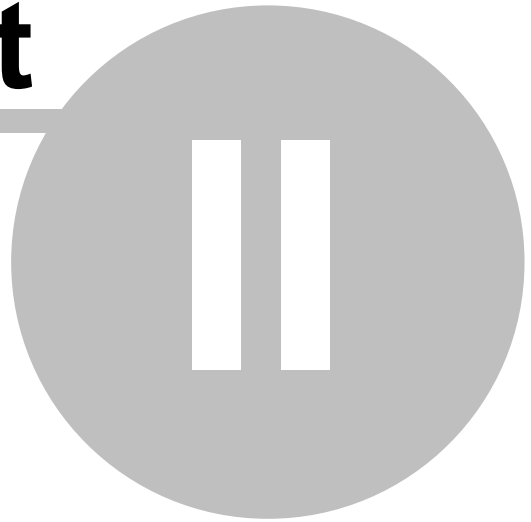


The last four parameters above may be specified differently for each stage of the analysis.

# Methods of Analysis

## Part

---



## 2 Methods of Analysis

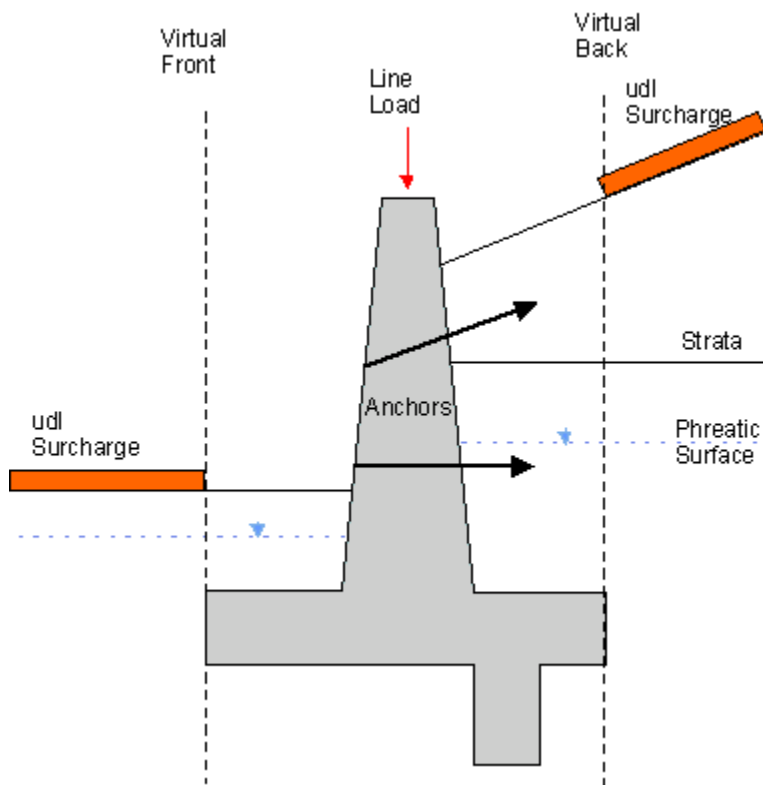
### 2.1 General

**Greta** performs two analysis to determine the overall stability of the wall and the forces in the stem and base. The user may decide whether or not to carry out the latter.

The shear forces and bending moments calculated for the stem and toe and heel of the base can be used as the basis for structural design.

#### 2.1.1 Overall Stability

The calculations for **overall stability** use the soil pressure profiles derived for the virtual boundaries on back and front of the wall.



Full active and passive earth pressures are calculated to determine the overall equilibrium of the wall.

For the soil behind the wall the active earth pressure is calculated using the soil coefficients  $k_a$  and  $k_{ac}$ . The passive pressures in front of the wall are calculated using the corresponding values of  $k_p$  and  $k_{pc}$ . The vertical components of friction and adhesion, for the front and back, are also included.

Soil and water pressure profiles are calculated for the full depth of the wall, including the shear key if present. These forces are used in the check for sliding and determination of the area and

pressure in the stress block.

### Vertical forces

#### General

Weight of wall  
(including key)

Anchor forces

Water pressure under  
base

Line load on top of wall

#### Back

Weight of soil above heel

Shear on virtual back

Shear on back of base

#### Front

Weight of soil above toe

Shear on virtual front

Shear on front of base

Note : Vertical shear forces for the depth of the shear key and surcharges confined by the area of the base, are **not included**.

### Horizontal forces

#### General

Anchor forces

#### Back

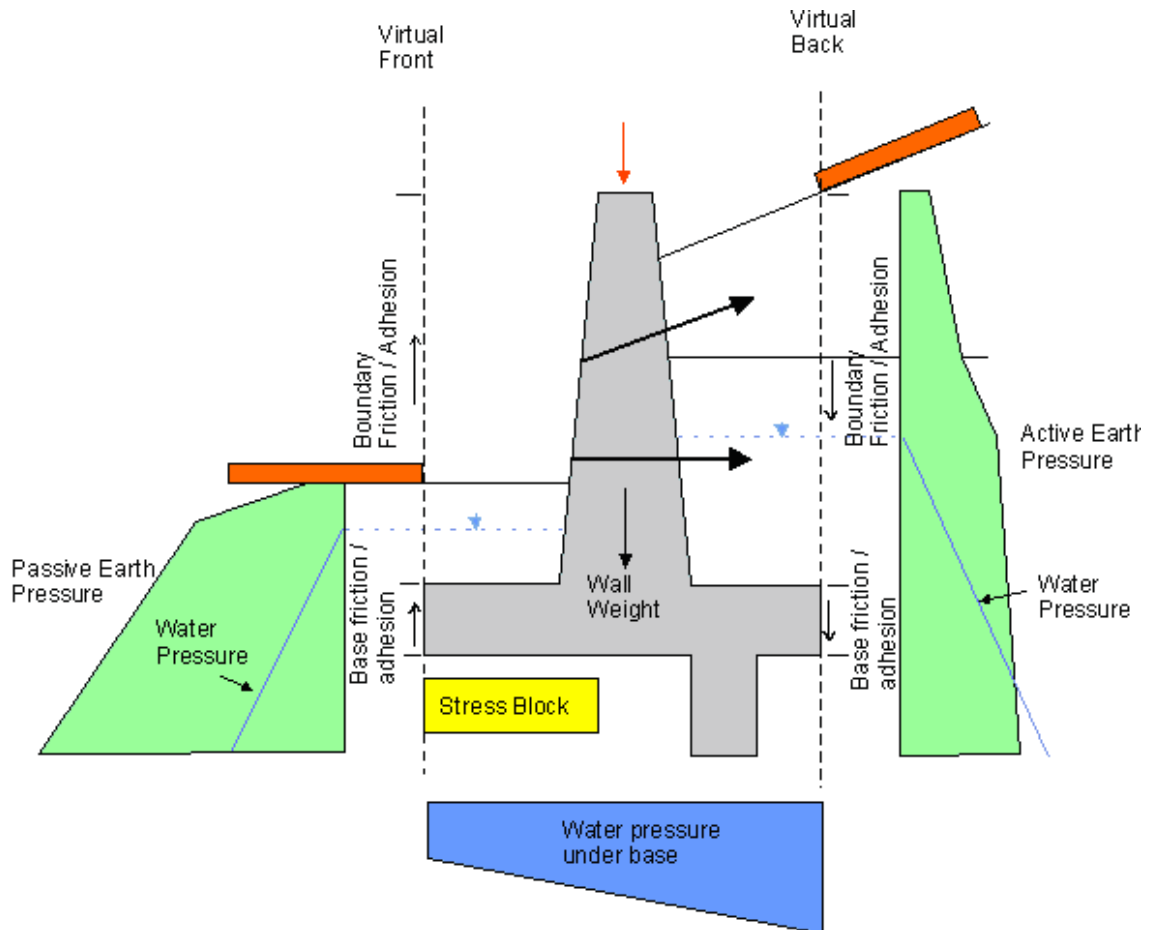
Soil pressure (virtual  
back)

Water pressure

#### Front

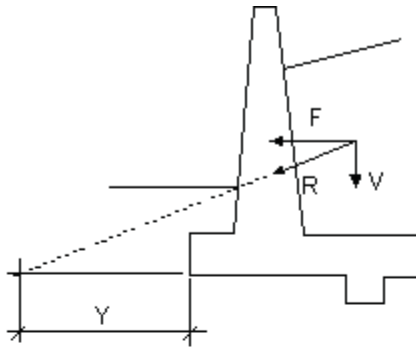
Soil pressure (virtual  
back)

Water pressure

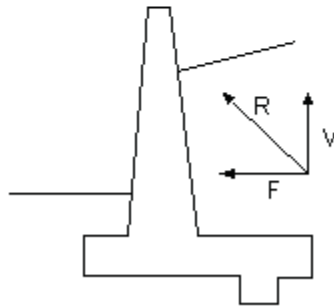


The total horizontal and vertical forces are resolved to provide an overall resultant force. The location of the intersection of the force with the base is given, including whether the force is located within the middle 1/3 or outside the area of the base.

Unstable configurations for the wall would be:

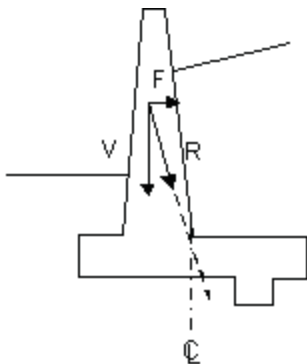


Line of action of resultant force lies outside base.  
Distance  $Y$  is calculated and reported.



Resultant vertical applied force is upward  
(i.e. Uplift)

The calculation is also stopped if the rotation of the wall is towards the heel.



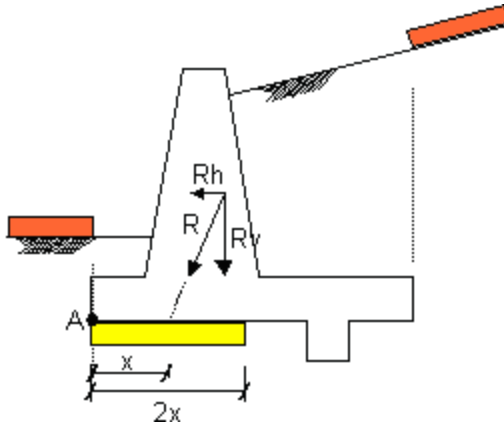
Resultant force lies beyond the  
centre line of the base.  
Wall rotation towards heel.

In this situation the active and passive pressures will be reversed and therefore the given calculation becomes invalid.

### 2.1.1.1 Plastic stress block / Bearing capacity failure

The plastic stress block is defined as the area of plastic deformation beneath the wall.

The total horizontal and vertical forces, calculated for overall stability, are resolved to provide an overall resultant force. The intersection of the resultant with the base of the wall is used to locate the centre of the plastic stress block. The total width of the stress block is defined as twice the distance of the intersection of the resultant force from the toe of the wall at A.



The vertical soil stress within the block is taken as  $R_v / 2x$

horizontal soil stress as  $R_h / 2x$

The user must check independently whether the stresses in the block would lead to bearing capacity failure. Appropriate shape, depth and inclination factors should be used in the calculation.

### 2.1.1.2 Sliding check

A check is made on the sliding resistance of the wall using the total horizontal force calculated for overall stability.

The allowable resistance  $R_s$  is taken from the input foundation properties where,

$$R_s = R_v \tan \delta + c_w A_b$$

$R_v$  = Resultant vertical force (Overall stability)

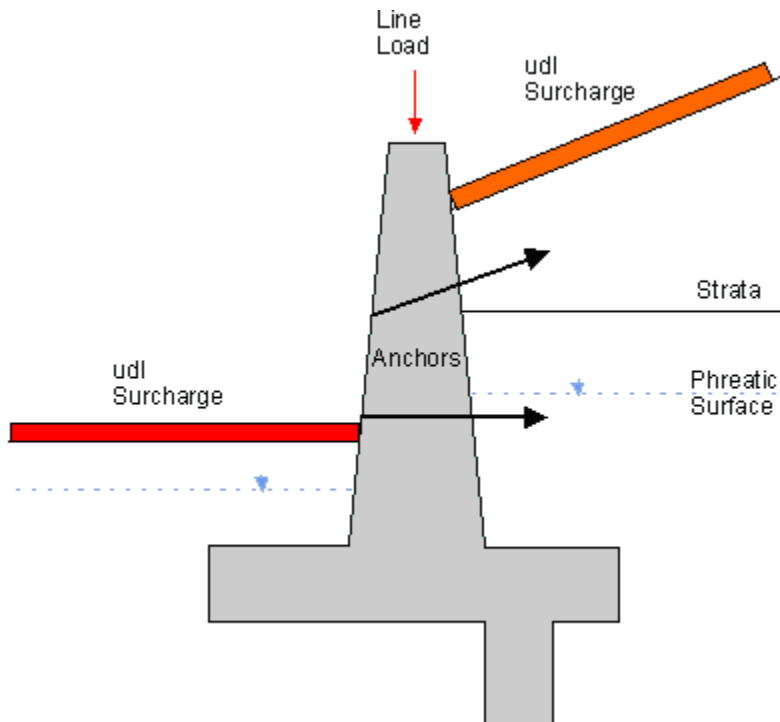
$\delta$  = Soil/Base friction angle

$c_w$  = Cohesion under base

$A_b$  = Area of base or [stress block](#) (length per unit width).

## 2.1.2 Wall and Base Forces

The calculations for **Wall / base** forces use the soil pressure profiles derived directly on back and front of the wall.



For the soil behind the wall the active earth pressure is calculated using the soil coefficients  $k_a$  and  $k_{ac(w)}$ . These values should allow for compaction stresses where appropriate. The passive pressures in front of the wall are calculated using the corresponding values of  $k_{p(w)}$  and  $k_{pc(w)}$ . These values are not necessarily the passive pressure coefficients of the soil, but can be used to define the stresses the user wishes to be applied to the front of the wall.

Soil and water pressure profiles are calculated for the full depth of the wall, including the shear key if present. These forces are used in the calculation of the pressures beneath the base of the wall and the shear force and bending moments in the stem and base.

The horizontal soil pressures **underneath the base** are taken at the virtual boundaries. In reality, the restraining force available from a shear key may be greater than this. The user may choose to model this effect by modifying the value assigned to the strength of the soil in front of the wall.

### Vertical forces

#### General

- Weight of wall (including key)
- Anchor forces
- Water pressure under base
- Line load on top of wall

#### Back

- Weight of soil above heel
- Shear on back of wall
- Shear on back of base
- Surcharge above heel
- Soil pressure (inclined back)
- Water pressure (inclined back)

#### Front

- Weight of soil above toe
- Shear on front of wall
- Shear on front of base
- Surcharge above toe

Note : Vertical shear forces for the depth of the shear key are **not included**.

### Horizontal forces

#### General

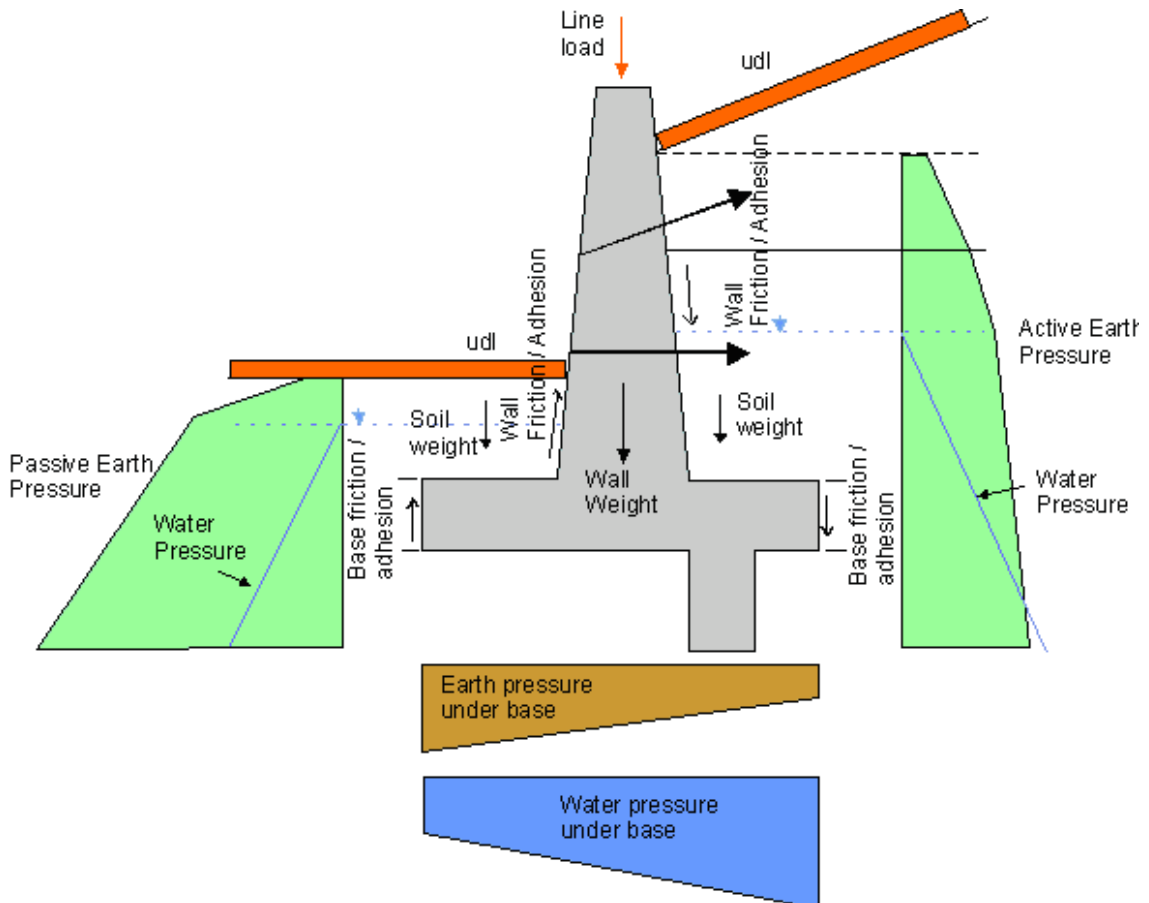
- Anchor forces

#### Back

- Soil pressure on back of wall
- Water pressure
- Shear force (inclined back)

#### Front

- Soil pressure on front of wall
- Water pressure
- Shear force (inclined front)

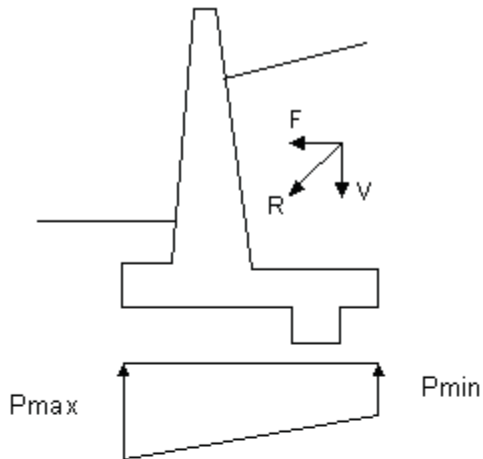


The total horizontal and vertical forces are resolved to provide an overall resultant force. The location of the intersection of the force with the base is given, including whether the force is located within the middle 1/3 or outside the area of the base.

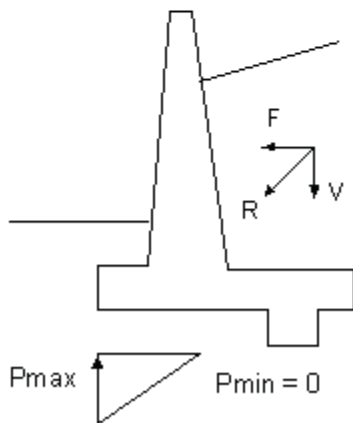
Unstable configurations are as for the overall stability calculations, see [Overall Stability](#).

Note : If the rotation of the wall is towards the heel then the calculation is stopped and a warning provided.

The soil and water pressure profile beneath the base is calculated as follows:



Force under base compressive at all points.  
Rotation towards toe.



Zero tension where force under base is not compressive.

Where

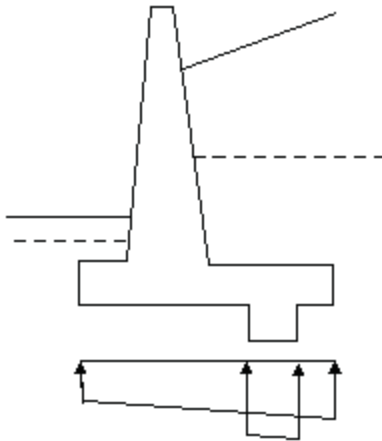
$$P_{max} = \frac{V}{B} \left( 1 + \frac{6e}{B} \right)$$

$$P_{min} = \frac{V}{B} \left( 1 - \frac{6e}{B} \right)$$

$B$  = width of base

$e$  = eccentricity of resultant  $R$  from centerline of base.

The water pressure beneath the base is taken as linear profile between the water levels at the front and back of the wall. This pressure profile is increased accordingly over the width of the shear key.



Force due to water pressure under base and shear key.

### 2.1.2.1 Shear key

The forces in the shear key are determined from the summation of the horizontal pressures acting down the virtual front and back of the wall beneath the base and the total vertical and horizontal forces calculated for the assessment of the forces in the stem and base.

The following table defines the reported calculations.

Net force on key  $F_{net} = (P_{psk} - P_{ask})$

Resultant horizontal force  $R_h$

(Wall / base forces)

Allowable shear on base  $S_b = (R_v - U)\tan\delta + c_w A_b$

(Wall / base forces)

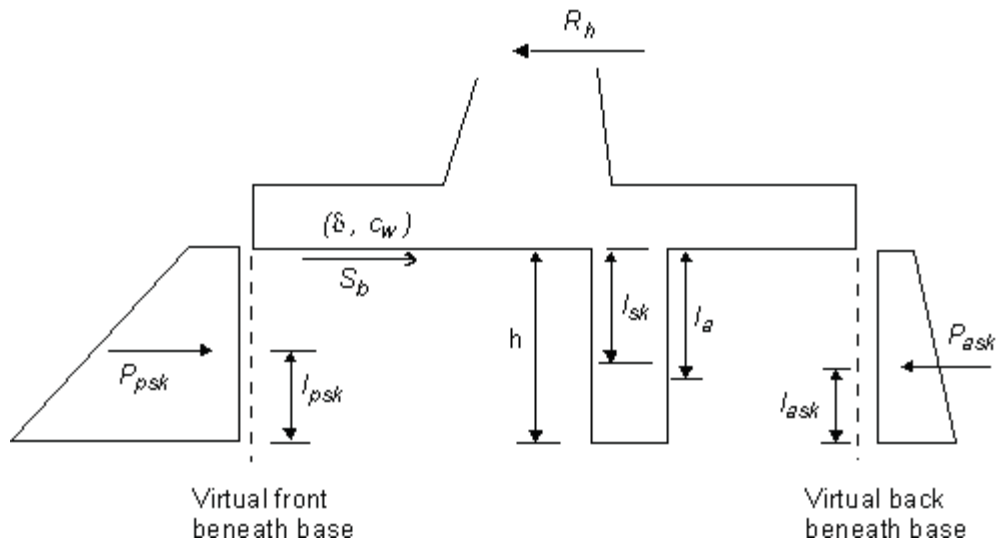
Additional force on shear key  $F_{sk} = (R_h - \tau_b)$  if  $R_h > \tau_b$  else  $F_{sk} = 0$

Assumed lever arm of additional force  $l_a = 2/3$  depth of the key (h)

Total horizontal force on key  $R_{hsk} = (P_{psk} - P_{ask}) + F_{sk}$

Lever of action of total force  $l_{sk} = h - \left( \frac{(P_{psk} * l_{psk}) - (P_{ask} * l_{ask}) + F_{sk} * (h - l_a)}{R_{hsk}} \right)$

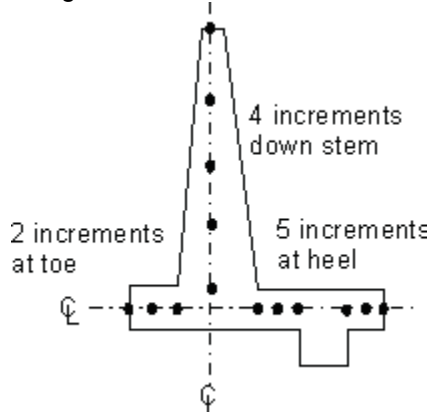
Bending moment in key  $BM_{sk} = R_{hsk} * l_{sk}$



Note : The above assumes that the shear key is capable of providing the horizontal force required to give horizontal equilibrium. The user needs to check that the soil in front of the key is capable of sustaining this force.

### 2.1.2.2 Bending moments and shear forces

The bending moments and shear forces are calculated at specified sections down the wall and along the toe and heel of the base.



The location of the shear key is checked and the spacing of the increments adjusted to place a point at either side of the key, as shown.

The shear forces are calculated from the summation of the vertical and horizontal forces acting on the stem and base as follows:

#### Horizontal forces on stem

- Soil pressures
- Water pressures

#### Vertical forces on base

##### Downward

- Friction at heel on base
- Weight of soil on toe or heel
- Weight of base slab
- Surcharges
- Weight of shear key

**Upward**

- Friction at toe on base
- Soil pressure beneath base
- Water pressure beneath base

Any horizontal forces on the stem due to friction are not included.

The bending moments are calculated by taking a lever arm from the top of the stem and the toe and heel ends of the base slab respectively. The moment due to any horizontal force on the shear key is also included in the calculation for the bending moments in the base.

**2.1.3 Earth Pressures**

The active and passive earth pressures are calculated at the top and base level of each stratum and at intermediate levels where there is a change in linear profile of pressure with depth e.g. location of phreatic surface.

Intermediate levels are also placed at the top and underside of the wall base and bottom of the shear key. The effective active and passive pressures normal to the wall are denoted by  $p'_a$  and  $p'_p$  respectively. These are calculated from the following equations:-

$$p'_a = k_a \sigma'_v - k_{ac} c'$$

$$p'_p = k_p \sigma'_v + k_{pc} c'$$

Where,

- $c$  = effective cohesion or undrained strength, as appropriate
- $\sigma'_v$  = vertical effective overburden pressure

Note : Modification of the vertical effective stress due to wall friction should be made by taking appropriate values of  $k_a$  and  $k_p$

$k_a$  and  $k_p$  = horizontal coefficients of active and passive pressure

$k_{ac}$  and  $k_{pc}$  = cohesive coefficients of active and passive pressure

Note : For conditions of total stress  $k_a = k_p = 1$ .

For a given depth  $z$

$$\sigma'_v = \int_0^z \gamma_s dz + \sigma_{zudl} - u$$

Where,

$\gamma_s$  = unit weight of soil

$u$  = pore water pressure

$\sigma_{zudl}$  = vertical sum of pressures of all uniformly distributed loads (udls) above depth  $z$ .

A minimum value of zero is assumed for the value of  $(k_a \sigma'_v - k_{ac} c')$ .

### 2.1.3.1 Friction and adhesion

Stresses due to friction are calculated at the virtual and front of the wall for assessment of overall stability and at the wall surface for calculation of the forces in the stem and base.

#### Overall Stability

For the virtual back and front and ends of the wall base the tangential stresses are taken as:

$$\text{boundary friction (active)} = p'_a \tan \phi_0$$

$$\text{boundary friction (passive)} = p'_p \tan \phi_0$$

$$\text{boundary adhesion} = c_0 h$$

Where,

$\phi_0$  = specified boundary friction for overall stability

$c_0$  = specified boundary cohesion for overall stability

#### Wall / base forces

Where the wall stem remains vertical the friction calculation at the wall interface (stem and base) is the same as for overall stability, but uses the friction parameters given for calculation of the wall/base forces.

Where the wall stem is inclined the calculations for the friction forces are separated into their horizontal and vertical components, where;

#### Friction

$$\text{horizontal friction (active)} = p'_a \tan \psi_b \tan \phi_w$$

$$\text{vertical friction (active)} = p'_a \tan \phi_w$$

$$\text{horizontal friction (passive)} = p'_p \tan \psi_f \tan \phi_w$$

$$\text{vertical friction (passive)} = p'_p \tan \phi_w$$

Where,

$\psi$  = angle of the wall stem to the vertical (front and back)

$\phi$  = specified friction for wall / base forces

#### Adhesion

$$\text{horizontal cohesion (active)} = p'_a \tan \psi_f c_w$$

$$\text{vertical cohesion (active)} = p'_a c_w$$

Use  $p'_p$  for passive equations.

$c_w$  = specified wall adhesion for wall / base forces

For information on friction beneath the base of the wall see, [Sliding check](#).

### 2.1.4 Bearing Capacity

#### Terzaghi's equation

$$U_{ult} = C_c N_c d_c i_c + q N_q d_q i_q + 0.5 \gamma B_{eff} N_{\gamma} d_{\gamma} i_{\gamma}$$

$U_{ult}$  Ultimate bearing capacity of soil

$C_c$  Cohesion between Soil ground and wall  
 $q$  Effective stress in front of wall  
 $\gamma$  Unit weight of soil above the base level  
 $B$  Effective width of wall based on horizontal surface  
 $\phi$  Angle of internal friction

$N_c, N_q, N_\gamma$  Dimensionless bearing capacity factors  
 $d_c, d_q, d_\gamma$  Dept factors  
 $i_c, i_q, i_\gamma$  Inclination factors

### Calculation of effective stress (q)

Effective stress is the cumulative sum of weight of soil in front side of the wall minus water pressure under base

### Effective width of wall (B)

The entire load acting from above is combined into two component forces having V as the vertical component and H as horizontal component.

The effective width of the foundation is such a way that its geometric center coincides its load center or the width of the plastic stress block, i.e. if the vertical component intersects the base at a distance a from the toe then the width of the base is 2a

### Dimensionless factors used in Terzaghi's Equation

These are derived using two theories

- Brinch Hansen Theory
- Meyerhof Theory

#### Brinch Hansen Theory

##### Bearing capacity factors

$$N_q = \tan^2(45+\phi/2)e^{\pi \tan \phi}$$

$$N_c = 5.14 \quad \text{if } \phi = 0$$

$$= (N_q - 1) / \tan \phi \quad \text{if } \phi > 0$$

$$N_\gamma = 1.8 (N_q - 1) \tan \phi$$

##### Inclination Factors

$$i_q = 1 - [(0.5 H) / (q + B c \cot \phi)]^5$$

$$i_\gamma = 1 - [(0.7 H) / (V + B c \cot \phi)]^5$$

$$i_c = [1 - (V / B c)^2] / 2 \quad \text{if } \phi = 0$$

$$= i_q - (1 - i_q) / (N_q - 1) \quad \text{if } \phi > 0$$

#### Meyerhof Theory

##### Bearing capacity factors

$$N_q = \tan^2(45+\phi/2)e^{\pi \tan \phi}$$

$$N_c = 5.14 \quad \text{if } \phi = 0$$

$$= (N_q - 1) / \tan \phi \quad \text{if } \phi > 0$$

$$N_\gamma = (N_q - 1) \tan 1.4\phi$$

##### Inclination Factors

$\theta = \tan^{-1}$  (Sum of Horr. forces / Sum of Vert. forces)

$$\phi = 0$$

$$i_q = 1 - (\theta / 90)$$

$$i_\gamma = 1$$

$$i_c = 1 - (\theta / 90)$$

$$\phi > 0$$

$$i_q = [1 - (\theta / 90)]^2$$

$$i_\gamma = [1 - (\theta / \phi)]^2 \quad \text{if } \theta \leq \phi$$

$$= 0 \quad \text{if } \theta > \phi$$

$$i_c = [1 - (\theta / 90)]^2$$

Depth Factors

$k = \text{Depth} / \text{Width of footing}$

$$\begin{aligned} \phi = 0 \\ d_q = 0.4 k \\ d_\gamma = 1 \\ d_c = 1 \end{aligned}$$

$$\begin{aligned} \phi > 0 \\ d_q = 1 + 0.4k \\ d_\gamma = 1 \\ d_c = 1 + 2 \tan \phi (1 - \sin \phi)^2 k \end{aligned}$$

Depth Factors

$k = \text{Depth} / \text{Width of footing}$

$$N_\phi = \tan^2(45 + \phi/2)$$

$$\begin{aligned} \phi = 0 \\ d_q = 1 \\ d_\gamma = 1 \\ d_c = 1 + 0.2 (N_\phi)^{1/2} k \end{aligned} \quad \begin{aligned} \phi > 0 \\ d_q = 1 + 0.1 (N_\phi)^{1/2} k \\ d_\gamma = 1 + 0.1 (N_\phi)^{1/2} k \\ d_c = 1 + 0.2 (N_\phi)^{1/2} k \end{aligned}$$

**2.1.5 Base Optimisation**

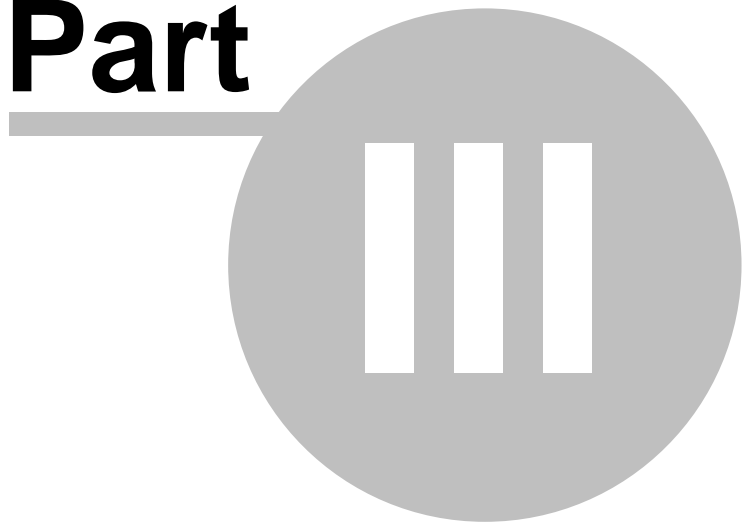
Greta provides a tool to optimise the base width by iterating the base width to achieve the minimum possible width giving full mobilization of soil strength, the wall is checked for sliding, overturning, bearing, and uplift using the factors of safety provided by the user.

The tool can be used to optimise the base width, and also find the minimum toe or heel width required for heel or toe width specified respectively.

To see how to use this tool please refer to [Base optimisation tool](#)

**Input**

**Part**



## 3 Input

### 3.1 Assembling Data

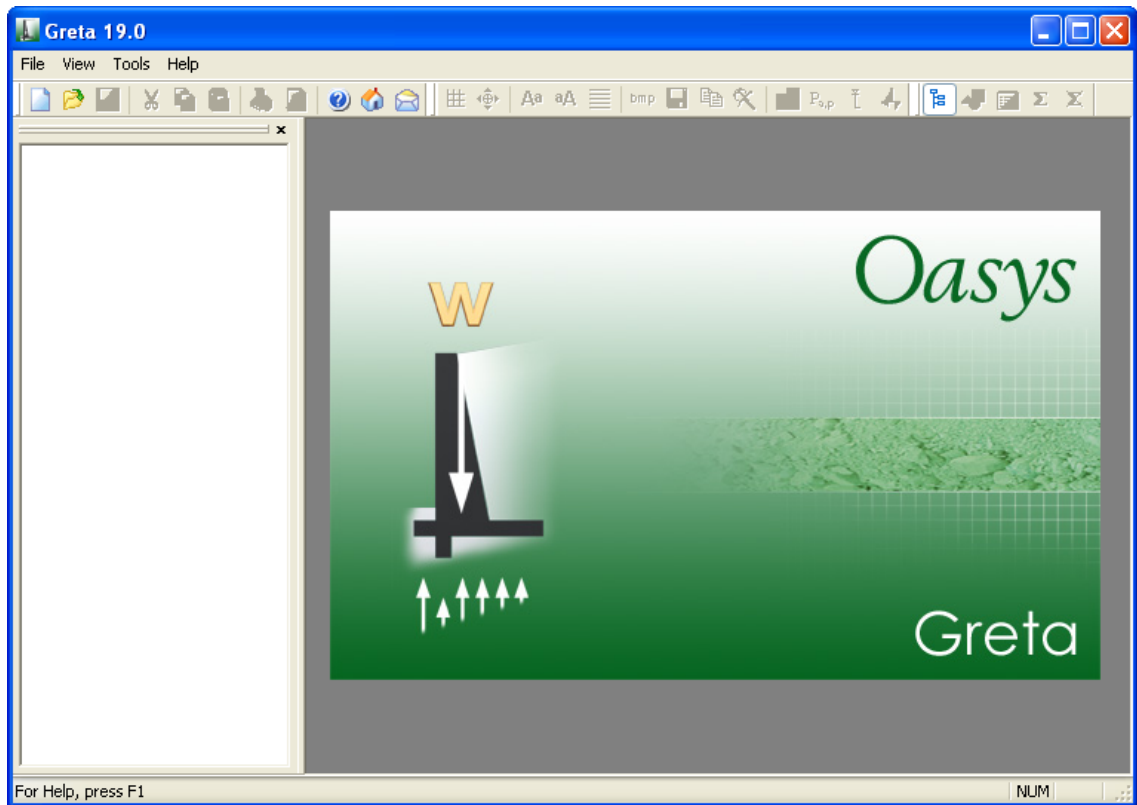
It is best to make a sketch of the problem **before the computer is approached** . This should comprise a cross section of the proposed wall with the:

- ground surface level and inclination
- location of each soil strata
- parameters of each material (Overall stability and wall/base forces)
- foundation material parameters
- phreatic surface
- location of any piezometers
- magnitude of any loads
- location of any anchors.

### 3.2 Opening the Program


The following provides details of all the data required to run the **Greta** program.

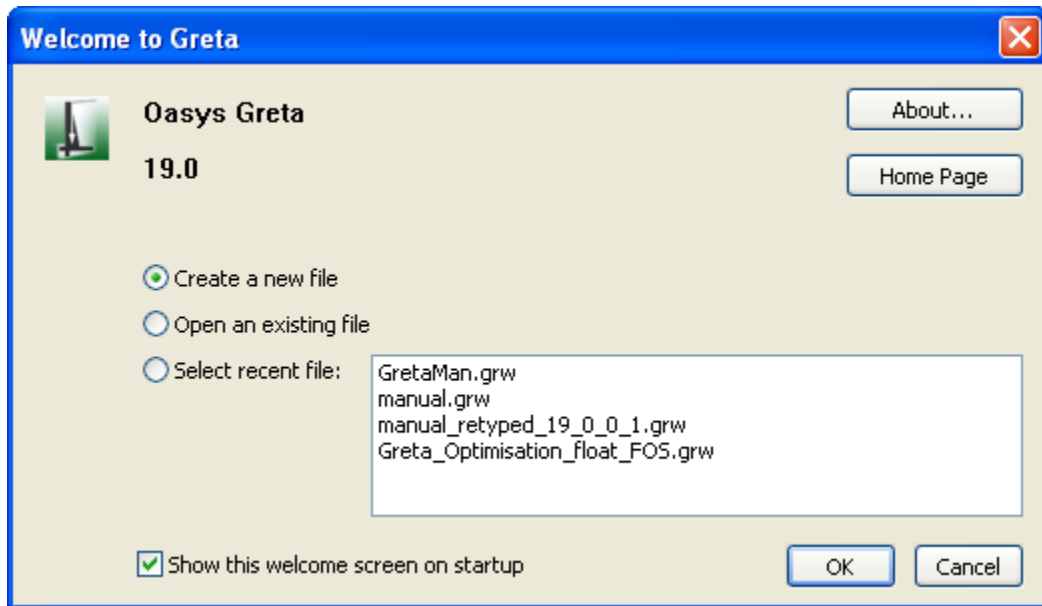
On selection of the **Greta** program the main screen will open.



This is the main screen within which all data, graphics and results are entered and viewed. All further information appears in a series of smaller or "child" windows, which are placed inside the main screen.

To start a new project file select :

- The "Create a new data file" option on the opening screen
- File | New or the icon .





This will open a new Titles window and allow you to proceed.

It is possible to open more than one data file at any one time. The file name is therefore displayed in the title bar at the top of each child window.



### 3.2.1 Intranet link and emails

To view the latest information regarding the **Greta** program or contact the support team click

on the internet  or  support team buttons on the Start screen or select the options from the toolbar.

List of information required and actions before contacting support team:

- Version of **Greta** (see top bar of program or Help | About **Greta**)
- Spec of machine being used
- Type of operating system
- Please pre-check all input data
- Access help file for information
- Check web site for current information
- Should you report a program malfunction then please attempt to repeat and record process prior to informing the team.

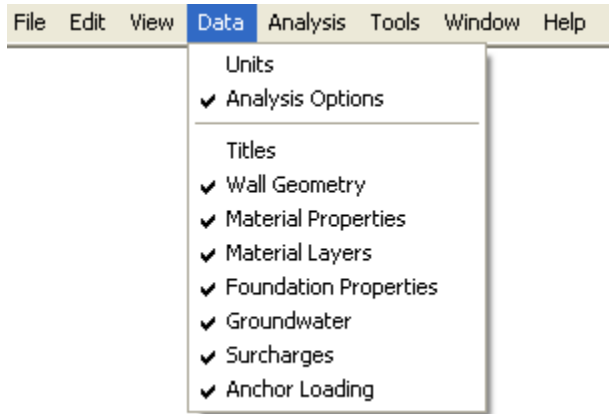
The web site aims to remain up to date with all data regarding the program and available versions. Should any malfunctions persist then the work around or fix will be posted on the web site.

In addition, if the user wants to email the input file that he/she is currently working on, to the

support team, he/she can do so by clicking File|Email... button.

### 3.3 Data Input Screens

Data is input via the Data menu or the [Gateway](#).



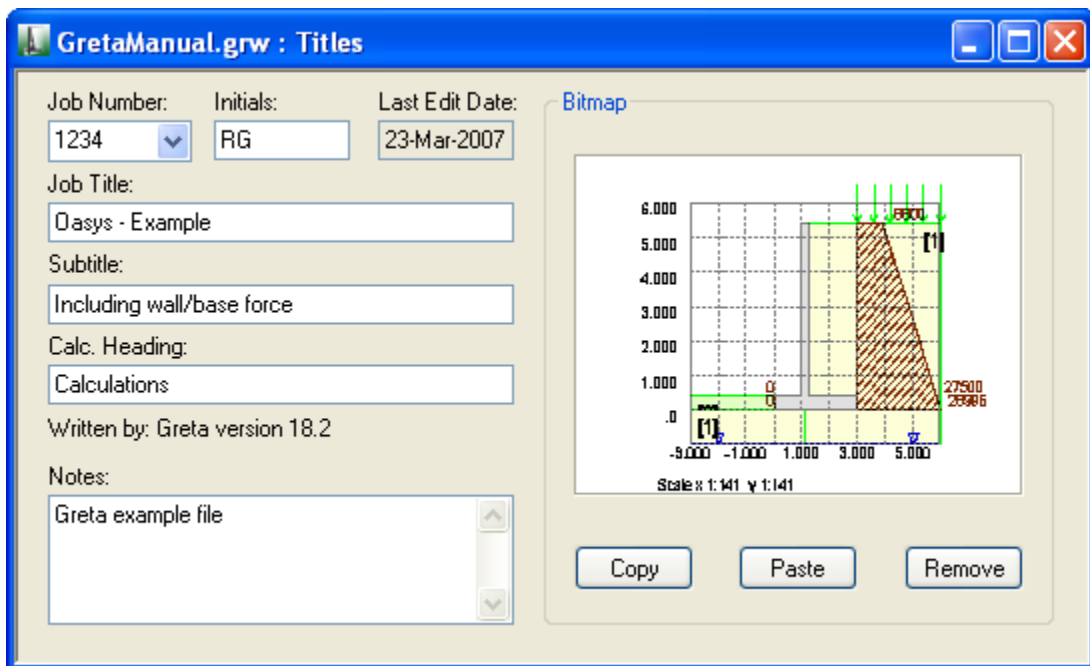
The information can be entered in any order, but Material Properties should be entered before specifying Material Layers.

Once the data has been entered the program places a tick against that item in the menu list.

The following describes each of the menu items in detail.

### 3.3.1 Titles

The first window to appear, for entry of data into **Greta**, is the Titles window.



This window allows entry of identification data for each program file. The following fields are available:

#### **Job Number**

allows entry of an identifying job number.

#### **Initials**

for entry of the users initials.

#### **Date**

this field is set by the program at the date the file is saved.

#### **Job Title**

allows a single line for entry of the job title.

#### **Subtitle**

allows a single line of additional job or calculation information.


#### **Calculation Heading**

allows a single line for the main calculation heading.

The titles are reproduced in the title block at the head of all printed information for the calculations. The fields should therefore be used to provide as many details as possible to identify the individual calculation runs.

An additional field for notes has also been included to allow the entry of a detailed description of the calculation. This can be reproduced at the start of the data output by selection of notes using File | Print Selection.

### 3.3.1.1 Titles window - Bitmaps

The box to the left of the Titles window can be used to display a picture beside the file titles. To add a picture place an image on to the clipboard. This must be in a RGB (Red / Green / Blue) Bitmap format. Select the  button to place the image in the box.

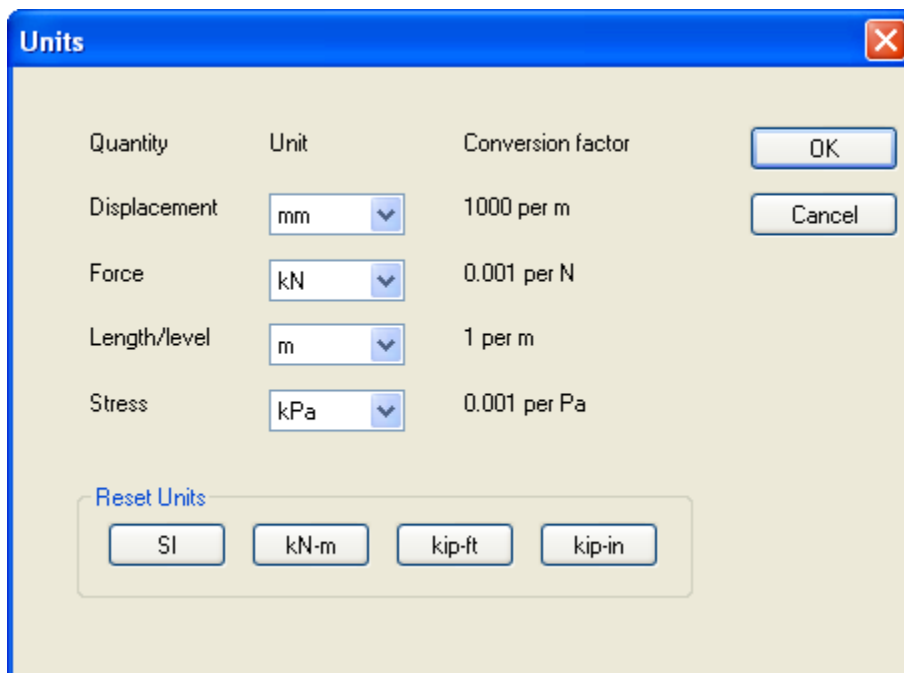
The image is purely for use as a prompt on the screen and can not be copied into the output data.

Note : Care should be taken not to copy large bitmaps, which can dramatically increase the size of the file.

To remove a bitmap select the  button.

### 3.3.2 Units

The Units dialog is accessible via the [Gateway](#), or by choosing Data | Units from the program's menu. It allows the user to specify the units for entering the data and reporting the results of the calculations. These choices are stored in, and therefore associated with, the data file.



Default options are the Système Internationale (SI) units - kN and m. The drop down menus provide alternative units with their respective conversion factors to metric.

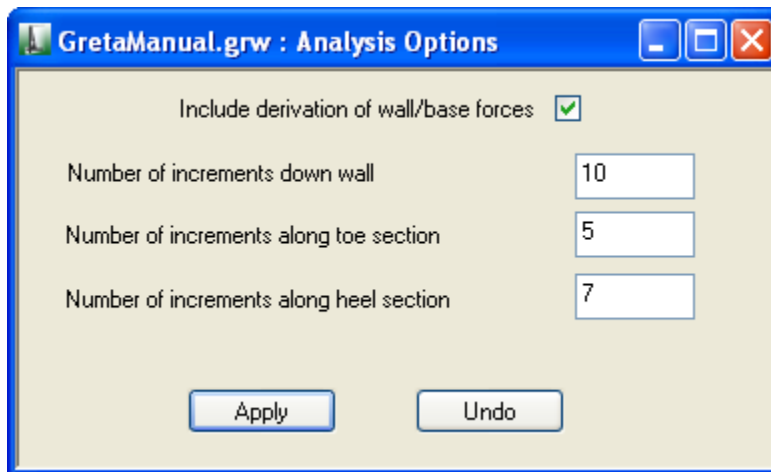
Standard sets of units may be set by selecting any of the buttons: SI, kN-m, kip-ft kip-in.

Once the correct units have been selected then click 'OK' to continue.

SI units have been used as the default standard throughout this document.

### 3.3.3 Analysis Options

The analysis options allows the user to specify the number of sections, down the stem of the wall and along the toe and heel of the base, to be taken for calculation of the shear forces and bending moments.



If the box for "Include derivation of wall/base forces" is checked then the calculation for shear forces and bending moments will proceed. Otherwise they will not be reported.

### 3.3.4 Wall Geometry

The geometry of the wall and wall weight must be defined here.

CRG6\_4.grw : Wall Geometry

**Wall Stem**

Level at top  A

Thickness at top  B

Thickness at base  C

Angle of back [deg]  D

**Wall Base**

Level of underside of base slab  E

Thickness of base slab  F

Distance from toe to front of wall stem  G

Distance from heel to back of wall stem  H

**Shear Key**

Distance from toe to front of key  I

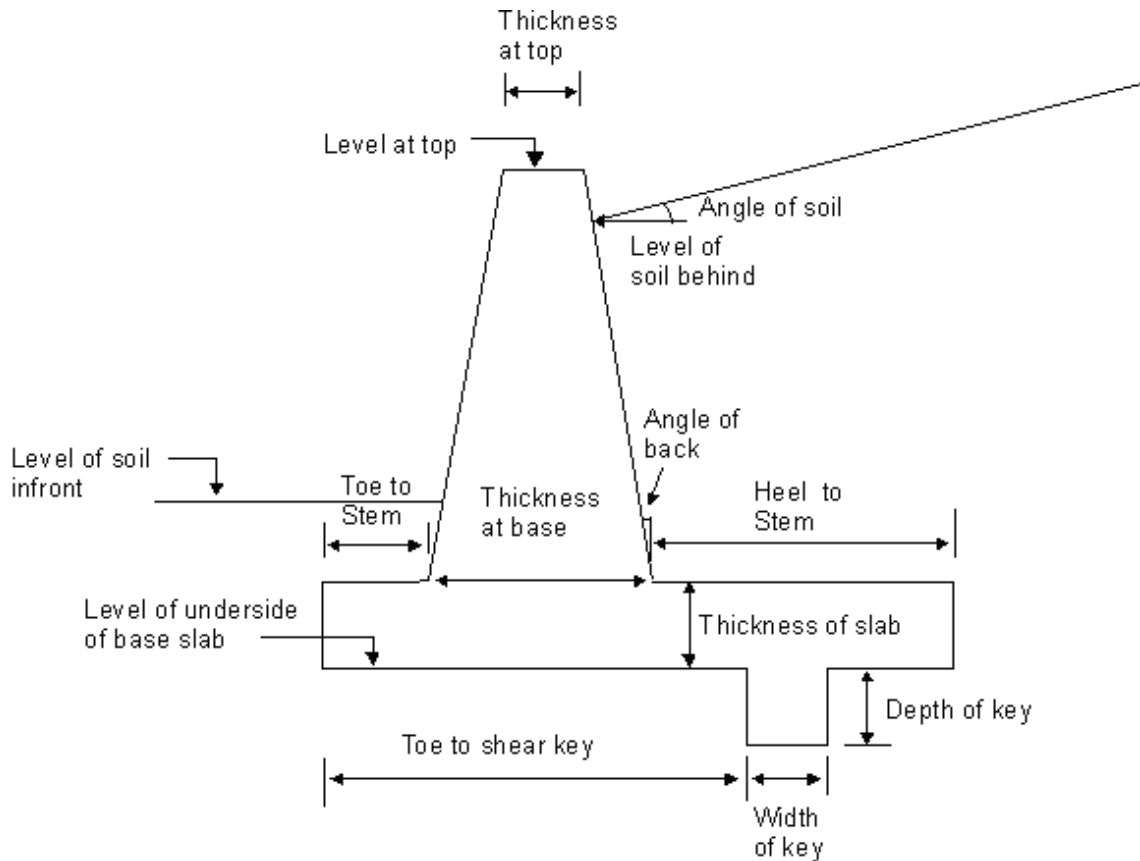
Depth from underside of base slab  J

Width  K

Unit weight of wall  [kN/m<sup>3</sup>]

Apply Undo

All other dimensions in m



### 3.3.5 Material Properties

The properties for the different materials, on either side of the wall, are entered in tabular form. For the data input select 'Material Properties' from the [Data menu](#) or the [Gateway](#).

Material	Description	Bulk unit weight		Strength parameters	
		Above GWL	Below GWL	Phi	Cohesion
		[kN/m3]	[kN/m3]	[°]	[kN/m2]
Defaults					
1	fill	17.00	17.00	40.00	0.00
2	ignore	0.01	0.01	0.10	0.00
3					

Navigation: \General / Overall Stability / Wall Base /

Brief **descriptions** for each of the material types can be entered here. You need, however, to remain aware of the material number given to each of the material types. This is located, as a default value, in the left hand column. This number is used when assigning material types to either side of the wall, thereby creating the [Material Layers](#).

General parameters for each material are entered on the first page of the table.

Individual parameters for each of the methods of solution must then be entered. The relevant tables are accessed by moving the mouse over the tabs at the bottom of the table and clicking

the left mouse button.

### Material Properties for Overall Stability

	A	B	C	D	E	F	G
Material	Description	Virtual Boundary		Active Coefficients		Passive Coefficients	
		Friction	Adhesion	Ka	Kac	Kp	Kpc
		[°]	[kN/m2]				
Defaults							
1	fill	0.00	0.00	0.220	0.000	0.000	0.000
2	ignore	0.00	0.00	0.000	0.000	0.000	0.000
3							

### Material Properties for Wall / Base Forces

	A	B	C	D	E	F	G
Material	Description	Soil/Wall		Active Coefficients		Passive Coefficients	
		Friction	Adhesion	Ka(w)	Kac(w)	Kp(w)	Kpc(w)
		[°]	[kN/m2]				
Defaults							
1	fill	26.30	0.00	0.179	0.000	0.000	0.000
2	ignore	0.00	0.00	0.000	0.000	0.000	0.000
3							

Overall stability	Wall/Base forces	Description
Virtual boundary friction	Soil / Wall friction	Angle of friction in degrees
Virtual boundary adhesion	Soil / Wall adhesion	Adhesion $c_w$
$k_a$	$k$	Active earth pressure
$k_{ac}$	$k_c$	Active earth pressure due to cohesion
$k_p$	$k_{pw}$	Passive earth pressure
$k_{pc}$	$k_{cw}$	Passive earth pressure due to cohesion

On occasions the user may wish to model an excavation in front of the wall. This can be achieved by including a soil type 'Air' in front of the wall. Parameters chosen should use a minimal bulk unit weight, (e.g. 0.01 KN/m<sup>3</sup>), low shear strength (e.g.  $\phi = 1.00$ ), and coefficients K (e.g. 0.1). This will help to provide minimal passive resistance in front of the wall.

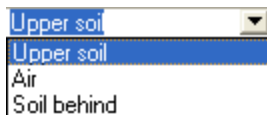
### 3.3.6 Material Layers

The level of the base of each material layer must be entered. The levels can be different on either side of the **wall only to the level of the underside of the base slab**. Material Layers can be entered by selecting 'Material Layers' from the [Data menu](#) or the [Gateway](#).

Beneath the base slab the same soil type must be selected for both sides of the wall. Only one soil type is analysed for siding and reaction on the shear key.

	A	B
Layer	Level at base [mOD]	Material
Defaults		fill
1	0.00	ignore
2	-1.00	fill
3		

For each material layer, the level of the **base** of the layer and the material type must be entered. The material type is selected from a drop-down list of all the descriptions entered in the Material Properties module.



### 3.3.7 Foundation Properties

The soil levels in front of and behind the wall, and the angle of the soil surface behind the wall, are entered here. The foundation properties used to assess the wall stability against sliding should also be entered. Foundation properties can be entered in tabular form by selecting 'Foundation Properties' from the [Data menu](#) or the [Gateway](#).

### 3.3.8 Groundwater

Groundwater data for the front and back of the wall is entered. Different levels and pressures can be used for assessment of the overall stability and wall / base forces. The value of the unit weight of water is, however, a global value for all piezometers. Groundwater can be entered in tabular form by selecting 'Groundwater' from the [Data menu](#) or the [Gateway](#).

	A	B	C	D
Point	Level	Pressure		Unit Weight
	[mOD]	Overall Stability [kN/m <sup>2</sup> ]	Wall / Base Forces [kN/m <sup>2</sup> ]	[kN/m <sup>3</sup> ]
Defaults				
1	-1.00	0.00	0.00	10.00
2				

If only one data point is entered for either side of the wall, the program will assume a **hydrostatic groundwater distribution** on that side of the wall. The pressure specified at the point need not necessarily be zero. For the first point on each side of the wall, the unit weight of water must also be entered.

For **hydrostatic** distributions the water pressure ( $u$ ) is calculated from

$$u = z_w \gamma_w$$

Where,

$z_w$  is depth below water table level, and  
 $\gamma_w$  is specified unit weight of water.

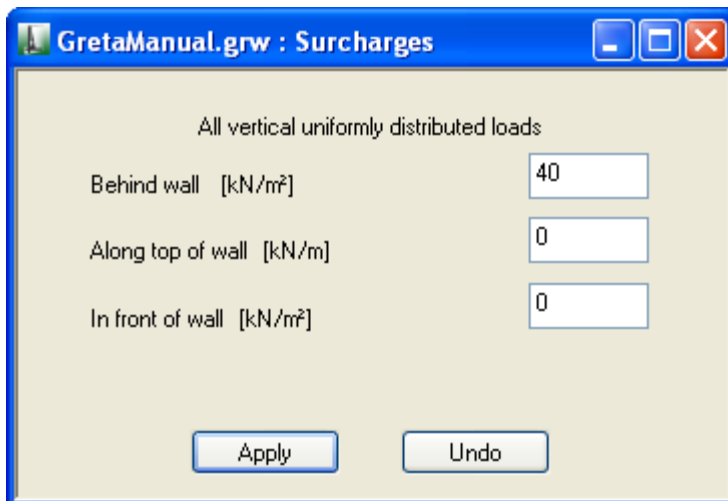
Thus a partial hydrostatic condition can be modelled by specifying a value of  $\gamma_w$  less than  $10\text{kN/m}^3$ .

Note : All defined water pressures are assumed to extend laterally from either side of the wall. For piezometric profiles the level and pressure at each known point must be entered. If more than one data point is entered, the program will assume that the points represent piezometers, and the groundwater pressure will be interpolated vertically between the specified points. Below the lowest point, groundwater pressure will be assumed to extend hydrostatically.

The groundwater pressure beneath the base slab is assumed to have a linear profile between the elevations at the front and back. Groundwater flow beneath the wall is not modelled.

### 3.3.9 Surcharges

Uniformly distributed surcharges can be placed on the surface of the soil on either side of the wall. A line load can also be placed at the centre line of the wall stem. Surcharges dialog can be invoked by selecting 'Surcharges' from the [Data menu](#) or the [Gateway](#).



GretaManual.grw : Surcharges

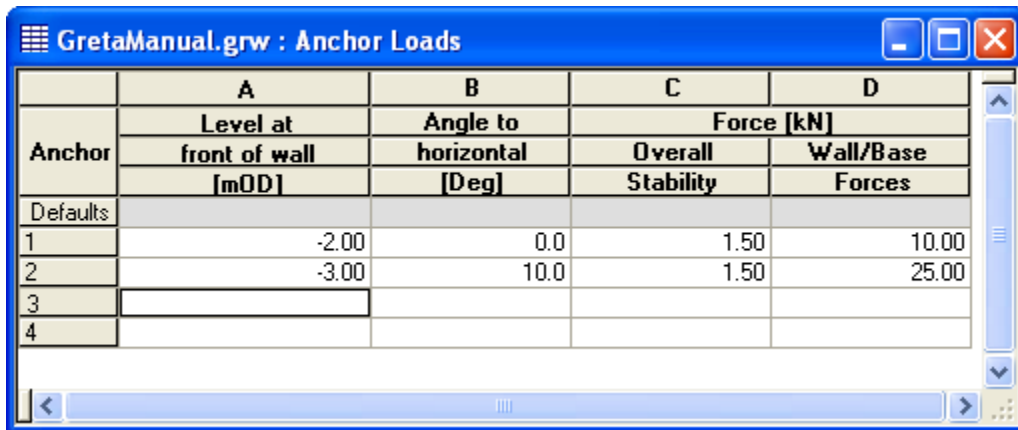
All vertical uniformly distributed loads

Behind wall [kN/m <sup>2</sup> ]	40
Along top of wall [kN/m]	0
In front of wall [kN/m <sup>2</sup> ]	0

Apply Undo

### 3.3.10 Anchor Loading

Anchors can be placed in the stem below the ground level at the back of the wall and above the top of the base slab. Anchors can be entered in tabular form by selecting 'Anchor Loading' from the [Data menu](#) or the [Gateway](#).




	A	B	C	D
Anchor	Level at	Angle to	Force [kN]	
	front of wall	horizontal	Overall	Wall/Base
	[mOD]	[Deg]	Stability	Forces
Defaults				
1	-2.00	0.0	1.50	10.00
2	-3.00	10.0	1.50	25.00
3				
4				

Each anchor can have a separate force applied for analysis of overall stability and wall / base forces. A single angle to the horizontal is required.

Anchor forces can also be used to represent forces in shores and struts.

Note : Users must satisfy themselves independently that the anchor systems are capable of sustaining the specified forces.

### 3.3.11 Base Optimisation Tool

The base width optimisation for optimum utilization of external properties can be carried out using the base optimisation tool, this can be accessed by clicking the  on [Greta toolbar](#) or from Tools | Optimise base from [Data menu](#)

**Optimise Base Slab Width**

**Initial Geometry of Wall**

Distance from toe to front of wall stem:  m  Optimise

Distance of heel to back of wall stem:  m  Optimise

Resultant within 1/3 of base width

**Optimized Geometry of wall**

Distance from toe to front of wall stem:  m

Distance of heel to back of wall stem:  m

Command:

Optimize Full Base  
Optimize Heel Only  
Optimize Toe Only  
Recalculate

**Comparison of checks**

Case	Force	Resistance	FOS	Remark
<b>Overall Stability</b>	<b>Iteration 1</b>	<b>Base Opt</b>		
Bearing (kPa)	261.39	261.68	1	Pass
Sliding (kN)	102.05	135.23	1	pass
Overturning (k...)	-226.46	331.39	1	Pass
Uplift (kN)	234.22			Pass
<b>Wall Base</b>	<b>Iteration 1</b>	<b>Base Opt</b>		
Bearing (kPa)	203.09	840.23	1	Pass
Sliding (kN)	83.03	135.23	1	pass
Overturning (k...)	-184.25	498.30	1	Pass
Uplift (kN)	357.15			Pass
Base=2.65m	Heel=2.05m	toe=0.30m		

The tool dialog box is divided into three sections

- Initial Geometry of wall that shall be edited only if the optimised results are accepted by the user,
- The optimisation and editing section where the user can specify different heel and tow width and optimise the other for the one he has specified
- And the "Comparison of results" sheet

**Output**

**Part**

---

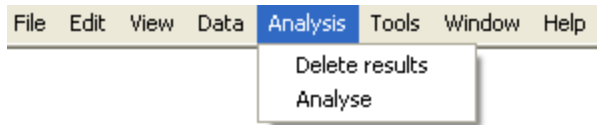


**IV**

## 4 Output

### 4.1 Analysis and Data Checking

Results can be obtained by selection of the Analysis menu.



Prior to analysis the program carries out a data check.

The data checks carried out are as follows:

- The material layers beneath the base slab are the same between the front and back.
- The anchors are all placed at or below ground level and above the top of the base.

If no errors are found then the calculation can proceed. Select OK.

Note: The option to Delete results becomes available once the calculations have been completed.

### 4.2 Tabular Output

Tabular Output is available from the View menu, the [Gateway](#) or the [Greta toolbar](#). The results are provided in both a full and condensed tabular form. The lists of tabulated output can be highlighted and then copied to the clipboard and pasted into most Windows type applications e. g. Word or Excel. The output can also be directly exported to various text or HTML formats by selecting Export from the File menu.

GretaManual.grw : Tabular Output

**NOTES**  
Greta example file

**RESULTS**

**SOIL AND WATER PRESSURES FOR OVERALL STABILITY**

**Pressures on virtual back surface**

Interface	Location	Strata	Level	Soil Pressures		Water Pressure
				Upper	Lower	
			[mOD]	[kN/m <sup>2</sup> ]	[kN/m <sup>2</sup> ]	[kN/m <sup>2</sup> ]
0	Ground level	0	1	5.40	.00	8.80
1	Top of base	1	1	0.40	27.50	27.50
2	Bottom of base	1	1	.00	29.00	29.00

**Pressures on virtual front surface**

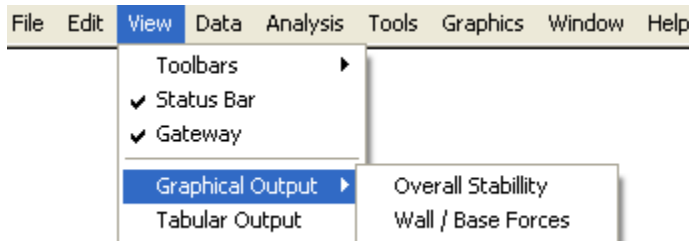
Interface	Location	Strata	Level	Soil Pressures		Water Pressure
				Upper	Lower	
			[mOD]	[kN/m <sup>2</sup> ]	[kN/m <sup>2</sup> ]	[kN/m <sup>2</sup> ]
0	Ground level	0	2	0.41	.00	.00
1	Top of base	2	2	0.40	.00	.00
2	Bottom of base	2	1	.00	.00	.00

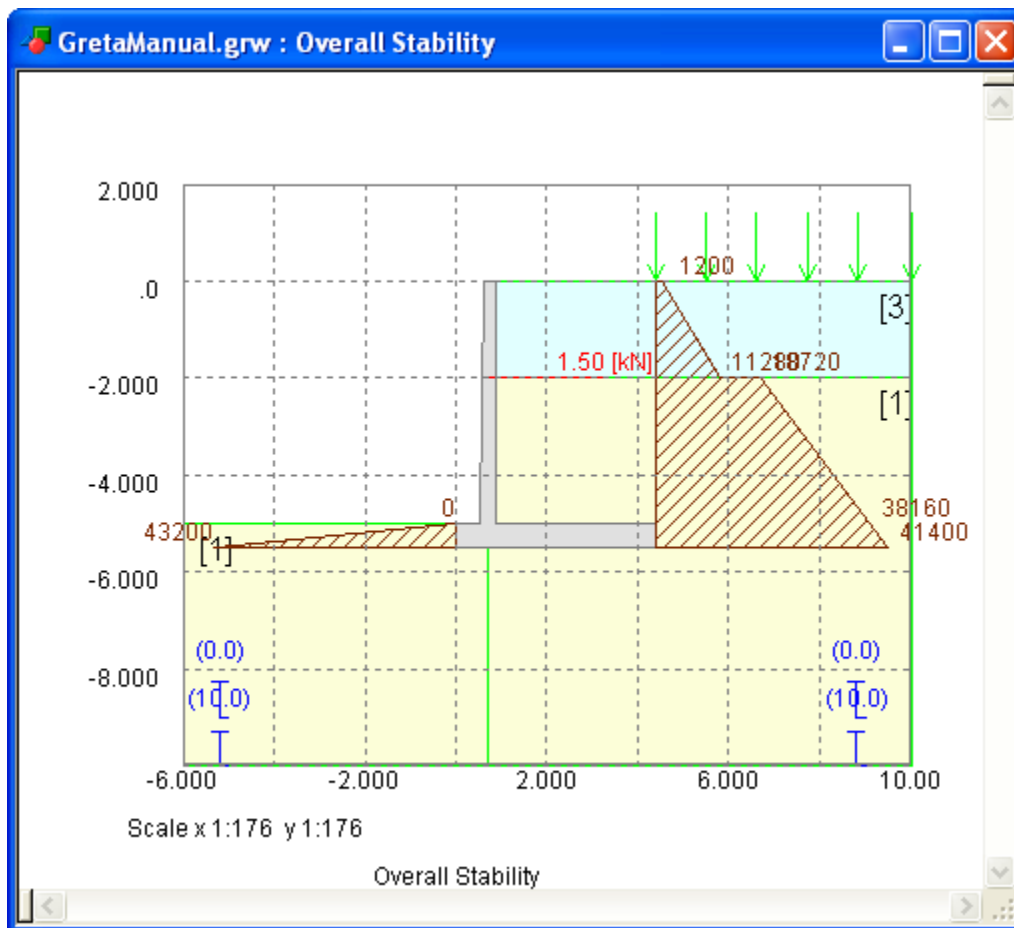
**Vertical component forces**

Component	Force	Moment	Lever arm
	[kN/m]	[kNm/m]	[m]
Weight of wall	63.45	81.08	1.28
Weight of soil	148.75	316.09	2.12
Shear on virtual back	.00	.00	.00

### 4.3 Graphical Output

Graphical output is accessed via the view menu using View | Graphics | Overall Stability and View | Graphics | Wall / Base Forces buttons, the [Gateway](#) or the [Greta Toolbar](#).





The graphical representation of the soil layers, the retaining wall, and surcharges is shown here.

This window has a toolbar which has buttons corresponding to different physical quantities like active and passive pressures, porewater pressure, soil layers and, bending moment and shear force diagrams.

When the user makes the appropriate selection, the corresponding plot is shown.

The plot can be exported in WMF format.

# List of References

## Part

---



V

## 5 List of References

### 5.1 References

**Boussinesq J (1885).** Applications des potentials a l'etude de l'equilibre et de mouvement des solides elastiques. (Gouthier-Villars,Paris)

**Mindlin R D (1936).** Force at a point in the interior of a semi-infinite solid. Journal Appl. Phys. 7, No.5 195-202.

**Vaziri H, Simpson B, Pappin J W and Simpson L, (1982).** Integrated forms of Mindlin's equations. Geotechnique Vol. 32 No.3 September.

# Manual Example

**Part**

---



---

## 6 Manual Example

### 6.1 General

The data input and results for the **Greta** manual example are available in the 'Samples' sub-folder of the program installation folder. The example has been created to show the data input for all aspects of the program and does not seek to provide any indication of engineering advice.

Screen captures from this example have also been used throughout this document.

This example can be used by new users to practice data entry and get used to the details of the program.

# Brief Technical Description

**Part**

---



**VII**

## 7 Brief Technical Description

### 7.1 Greta

**Greta** is used for analyzing gravity retaining walls. It performs two calculations which assess the overall stability of the wall and the forces in the stem and base.

The calculation for Overall Stability examines the static equilibrium of the wall. The program assumes that full active and passive soil pressures develop on the virtual boundaries behind and in front of the wall respectively. The wall is assumed to act as a rigid body together with any soil encompassed by the vertical planes through the extremities of the wall base.

The total horizontal and vertical forces are resolved to calculate the force on the base of the wall. The required reaction of the foundation soil is then calculated to provide equilibrium of the wall. The bearing capacity of the foundation soil is not checked by the program and must be carried out as a separate calculation by the user.

The location of the resultant force is also checked and reported. If the rotation of the wall due to the applied force is towards the heel then the calculation is stopped.

The program also calculates the horizontal component of load on the wall and the sliding resistance of the foundation. The user can specify separate shear strength parameters for the foundation soil to those used for creation of the active and passive pressures.

Application of factors to loads or soil strengths, to assess the factor of safety of the wall, is at the discretion of the user.

The calculation for the development of Wall/Base Forces provides shear forces and bending moments in the stem and base of the wall. The calculation also uses the full active and passive pressures on either side of the wall. These are applied against the stem and base of the wall and not at the virtual boundaries. These may be used in the structural design of the wall.

# Index

## A

Active 9, 14, 48  
Adhesion 20  
Air 32  
Allowable Resistance 13  
Analysis and Data Checking 40  
Analysis Options 30  
Anchor 2  
Anchor Forces 9  
Anchor Loading 36  
Angle 34  
Assembling Data 24

## B

Base Slab 33  
Bearing Capacity 2, 13  
Bending 17, 18  
Bending Moments and Shear Forces 18

## C

Components of the User Interface 3

## D

Data Input 27  
Deformation 13  
Descriptions 32

## E

Earth Pressures 19  
Email 26  
Equilibrium 17, 48  
Example 46  
Excel 40

## F

Factor of Safety 2  
Failure 13  
Foundation Properties 34  
Friction 20

## G

Gateway 3  
General 46  
General Program Description 2  
Graphical Output 3, 41  
Graphics Toolbar 3  
Gravity Retaining Walls 2  
Greta 9, 48  
Greta Toolbar 3  
Ground Anchors 5  
Ground Water Pressures 5  
Groundwater 35

## H

Heel 5, 9, 30  
Horizontal 9  
Horizontal Forces 14  
Hydrostatic 35

## I

Increments 18  
Intermediate 19  
Intranet Link And Emails 26

## K

Key 5, 9, 17

## L

Line Load 5, 9, 36

## M

Material Layers 33

Material Properties 32  
Middle 9  
Moment 17

## N

Net Force 17  
Number of Sections 30

## O

Opening the Program 24  
Overall Equilibrium 9  
Overall Stability 2, 9, 13, 20, 48

## P

Passive 9, 14, 32, 48  
Phreatic 19  
Piezometers 35  
Plastic 13  
Plastic Stress Block 13

## R

References 44  
Resultant Force 48  
Rotation 2, 14, 48

## S

Screens 27  
Shear Forces 9  
Shear Key 13, 14, 17  
Shores 36  
SI 29  
Sliding Check 13  
Sliding Resistance 13  
Soil Coefficients 5  
Soil Strata 5  
Standard Toolbar 3  
Static Equilibrium 2  
Stem 2, 30  
Stress Block 9  
Structural Design 2  
Structural Types 5

Struts 36  
Support 26  
Surcharges 9, 36

## T

Table View 3  
Tabular Output 3, 40  
Tapering 5  
Titles 28  
Titles Window - Bitmaps 29  
Toe 5, 30  
Toolbar 3

## U

Underside 33  
Uniform Surcharges 5  
Units 29  
Unstable 9, 14  
User Interface 3

## V

Vertical Forces 14  
Vertical Soil Stress 13  
Virtual 48  
Virtual Back 9  
Virtual Front 9

## W

Wall / Base 30, 36  
Wall / Base Forces 2, 20, 48  
Wall And Base Forces 14  
Wall Geometry 31  
Wall Stability 34  
Water Pressure 9, 14  
Weight 9

Endnotes 2... (after index)

