

REPORTER 9.4

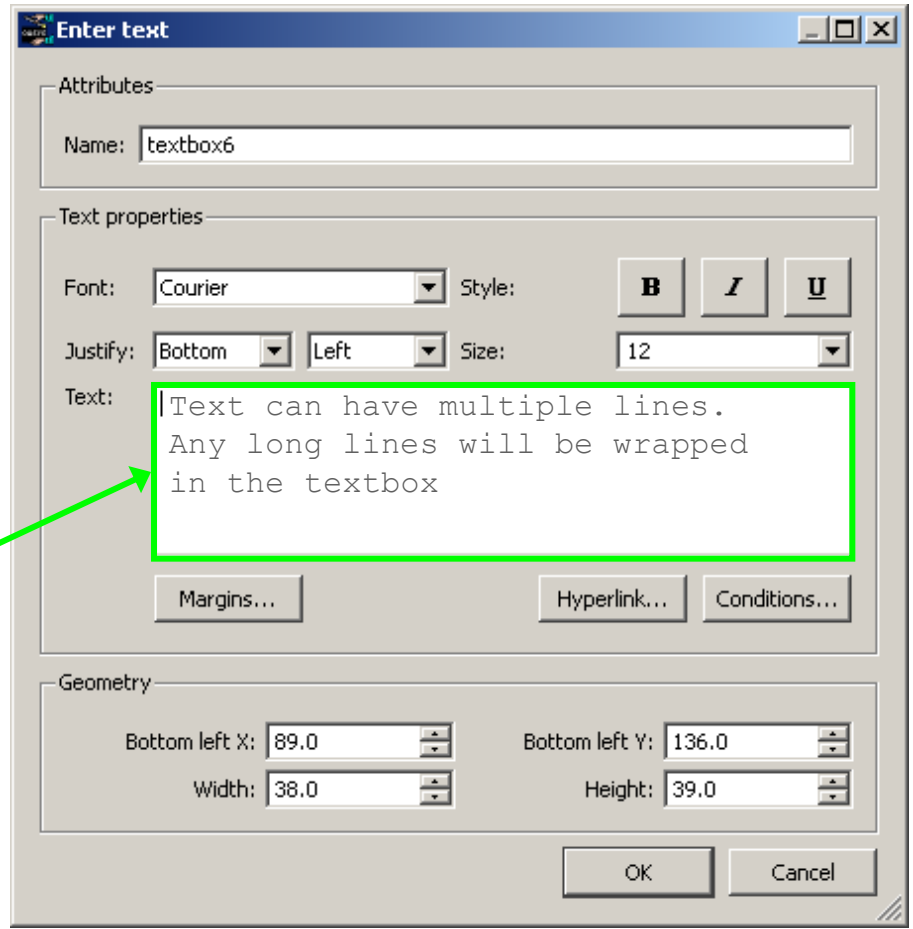
- [Text boxes](#)
- [Batch mode for D3PLOT and T/HIS](#)
- [Crop images](#)
- [Library programs](#)

- REPORTER now has a 'Text Box' object.



Insert text box object by dragging screen area. Dialogue box is then mapped

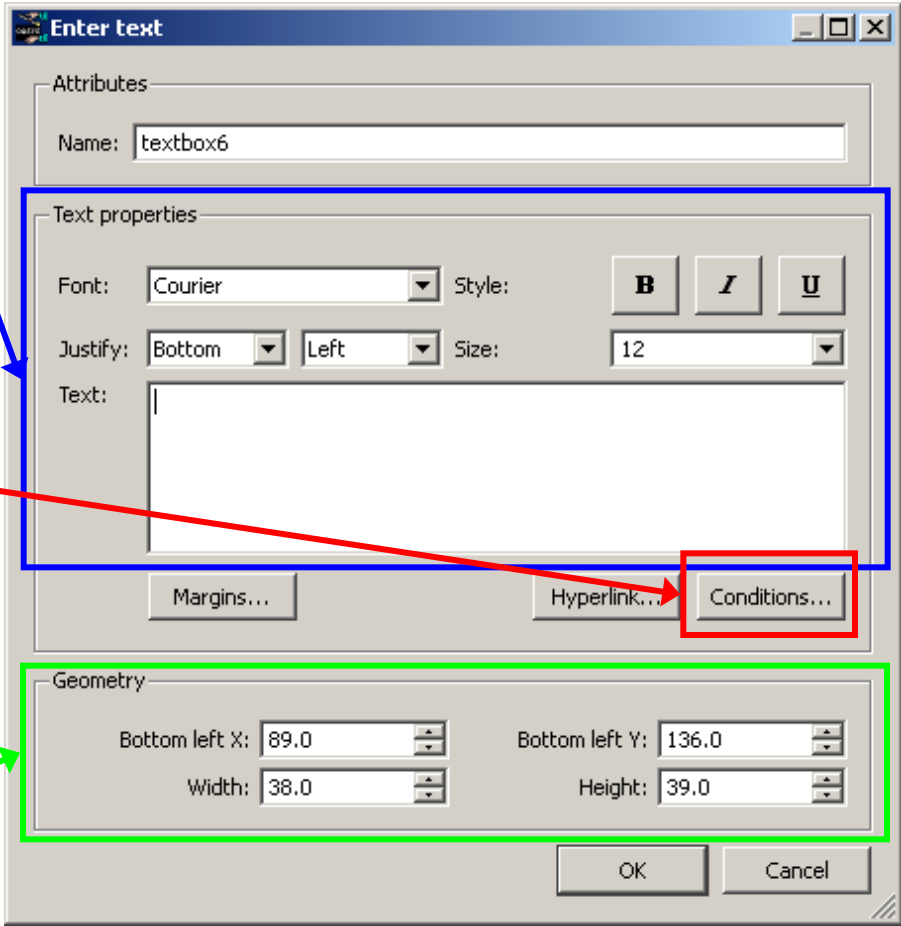
Text can have more than one line
Text will be wrapped if lines are too long.



Set the text to be displayed along with the font properties, colour and justification.

Set conditional text formatting

Set the text box size and position.

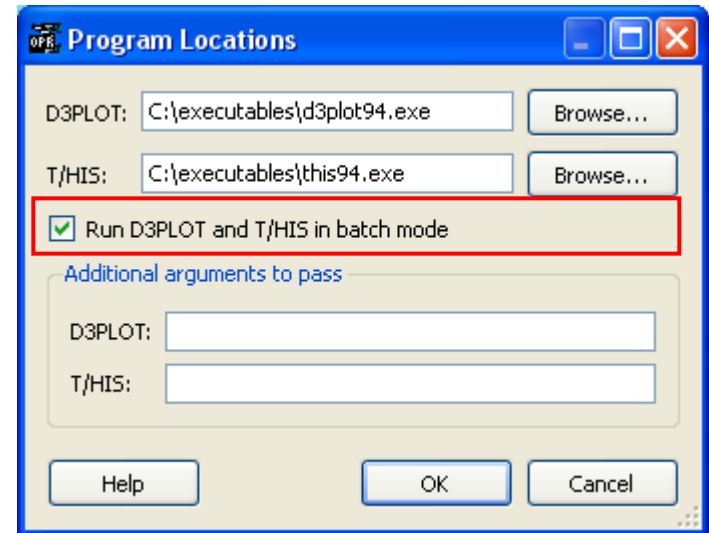


Fill colour and border can be set.



Text Box

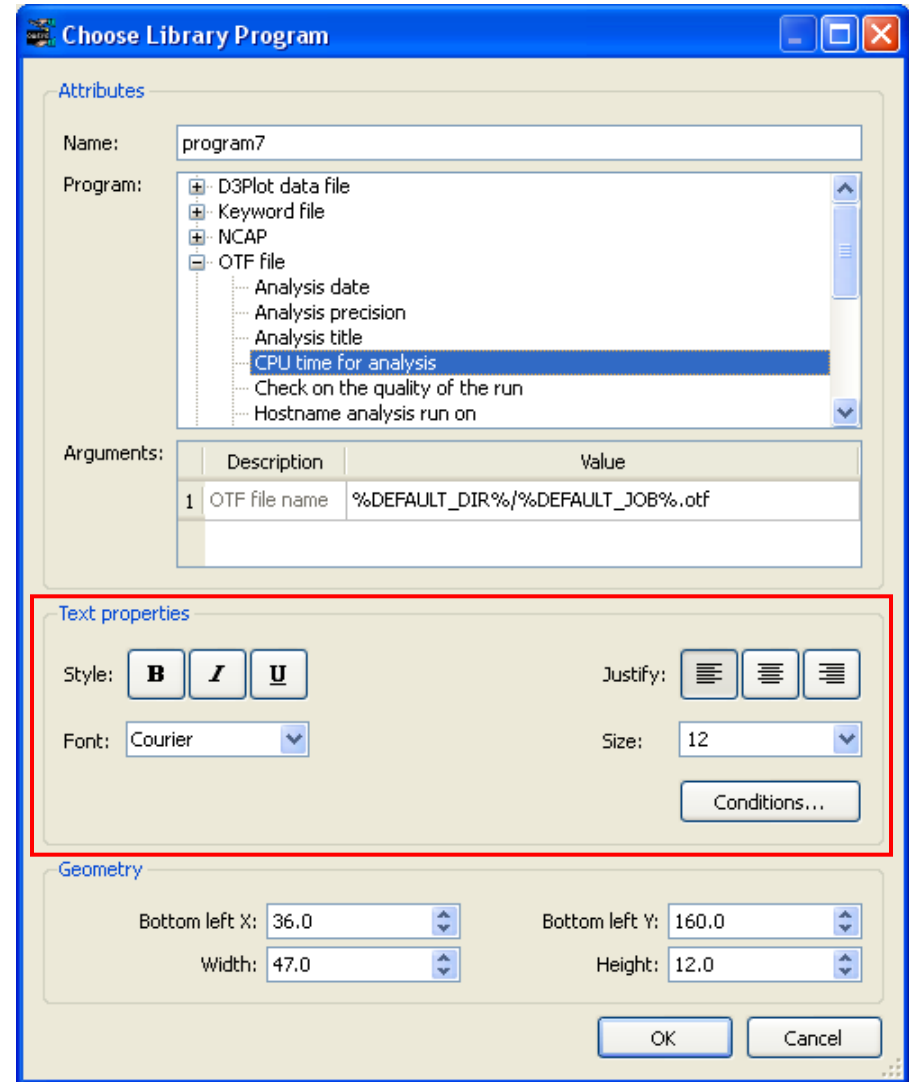
- On Windows D3PLOT and T/HIS can now be run from REPORTER in batch mode.
- No D3PLOT or T/HIS window will be displayed while capturing the images.
- REPORTER can be minimised while you continue working on other things.
- To run in batch either run REPORTER with the `-batch` command line argument or tick the checkbox in the Program Locations menu.



- Images can now be cropped

The diagram illustrates the process of cropping an image. It starts with a 3D model of a light blue car with a damaged front end. A red arrow points to the same model, but now the image is cropped to focus on the front end. Below the first model is a dialog box titled "Enter image file information". This dialog has two sections: "Attributes" and "Geometry". In the "Attributes" section, the "Name" is "imagefile2_4" and the "File" is "%DEFAULT_DIR%\basic004.jpg". There are "Choose..." and "Cropping..." buttons. The "Cropping..." button is highlighted with a red box. A red arrow points from this button to a second dialog box titled "Edit image cropping". This dialog has a "Cropping" section with four input fields: "Left" (90), "Top" (100), "Right" (220), and "Bottom" (220). There are "OK" and "Cancel" buttons at the bottom.

- Text properties can now be set when inserting library programs.
- An additional user library directory to search for programs can be specified by using the reporter*library_directory preference
- When editing library programs the library program dialogue is now used instead of the 'normal' program dialogue.



ARUP

www.arup.com/dyna

For more information please contact the following:

UK:

Arup

The Arup Campus
Blythe Valley Park
Solihull, West Midlands
B90 8AE
UK

T +44 (0)121 213 3399

F +44 (0)121 213 3302

dyna.support@arup.com

China:

Arup

39/F-41/F Huai Hai Plaza
Huai Hai Road (M)
Shanghai
China 200031

T +86 21 6126 2875

F +86 21 6126 2882

china.support@arup.com

India:

nHance Engineering Solutions Pvt. Ltd (Arup)

Plot No. 39, Ananth Info Park
Opposite Oracle Campus
HiTec City-Phase II
Madhapur
Hyderabad - 500081

India

T +91 (0) 40 44369797 / 8

india.support@arup.com

or contact your local distributor